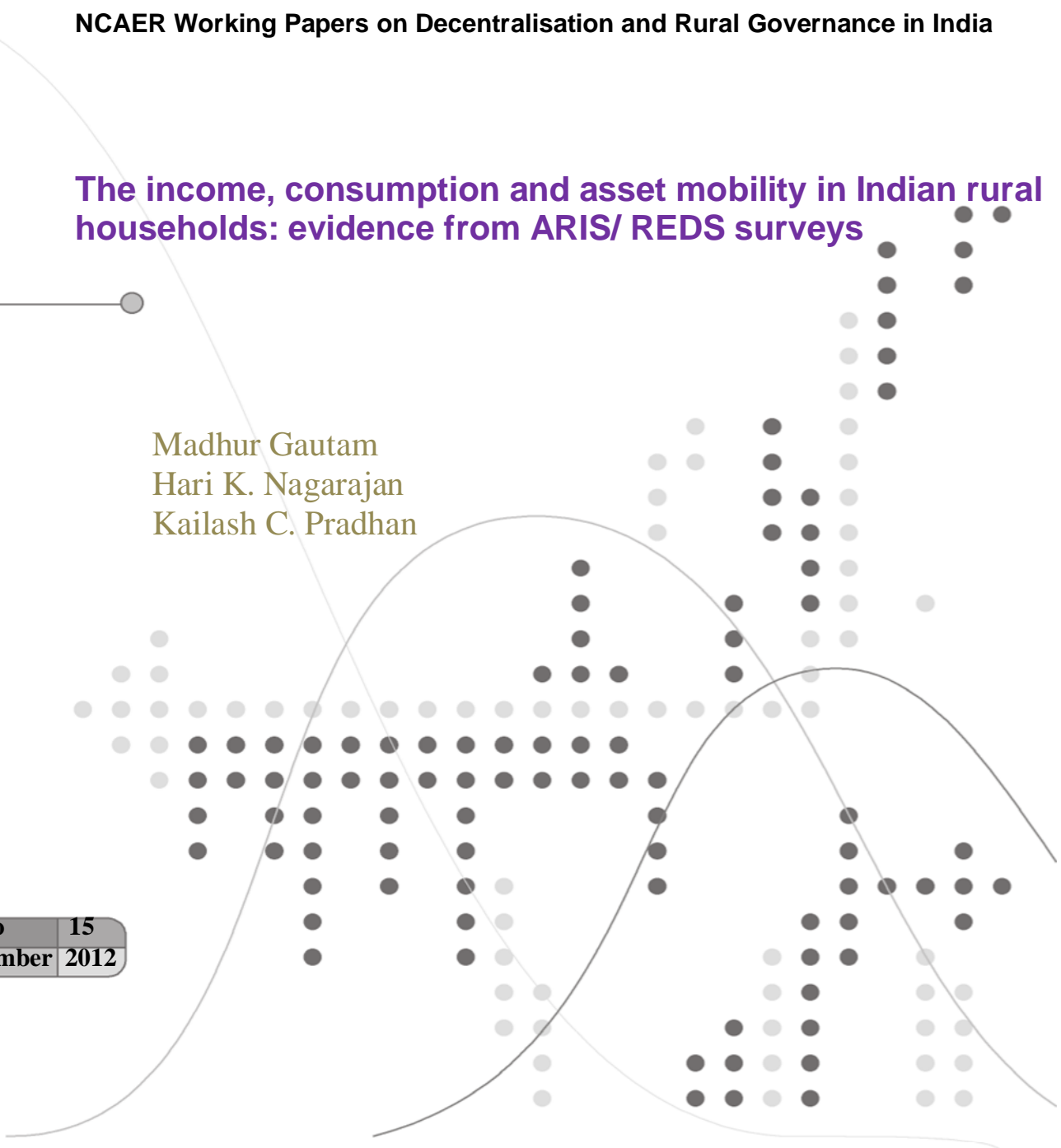


NCAER Working Papers on Decentralisation and Rural Governance in India

The income, consumption and asset mobility in Indian rural households: evidence from ARIS/ REDS surveys

Madhur Gautam
Hari K. Nagarajan
Kailash C. Pradhan

No 15
December 2012



The income, consumption and asset mobility in Indian rural households: evidence from ARIS/ REDS surveys

Madhur Gautam*, Hari K. Nagarajan and Kailash C. Pradhan

Abstract

The study examine the mobility of households with respect to time-independence, positional movement, and directional income, consumption and assets movement using transition matrices. Transition matrices are most intuitive tools to comprehend mobility and are based on *Shorrocks*'s (1978) measures of mobility. Economic mobility is a significant consequence of income inequality and growth. In this paper, the study have used a unique ARIS/ REDS surveys 1999 and 2007 data set for rural India to determine the reasons and magnitude of income, consumption and income mobility. The economic mobility has estimated for the land classes, ICRISAT agro-climate zones, different region such as east, south west and north, consumption classes, income quintiles, agricultural profit classes, assets classes, caste groups and gender groups. There exists wide income, consumption and asset diversity among different classes.

Keywords: Income, consumption and asset mobility, diversity, India.

JEL Classification: D31

[#] The findings, interpretations and conclusions expressed here are those of the authors and do not necessarily reflect the views of NCAER or its Governing Body.

* The corresponding author. E-mail: Mgautam@worldbank.org. Madhur Gautam is *Lead Economist, Agriculture and Rural Development, South Asia Region, World Bank*. Hari Nagarajan is Senior Fellow at the National Council of Applied Economic Research, New Delhi, India and Kailash Pradhan is an Associate Fellow at the Council. The authors are grateful to the International Development Research Center of Canada for the support provided for this research.

I. Introduction

The last three decades have been a period of considerable economic change in the Indian economy; in particular, the spread of new agricultural technologies in the Green Revolution during the 1970s, the industrial reforms during the 1980s and the extensive structural reforms during the 1990s. The 1990s also witnessed high economic growth about six to seven per cent per annum in average but were accompanied by enlarged disparities in earnings and living standards. These structural changes are likely to have influenced the pattern of livelihood, income, consumption and assets. For instance, the New Industrial Policy of 1991 significantly has modified the requirements regarding the location of industries in rural areas. It can be expected to have an impact on employment and occupational patterns within villages that are relatively well-integrated with the wider economy. Similarly, policies promoting rural non-farm employment or agro-based industries either directly or indirectly (e.g., through the liberalization of inter-state and international agricultural trade) would influence household income, consumption and assets through their effects on occupation and activity specialization patterns. As a result, the study would expect to find a high, and possibly increasing, degree of mobility among households depending on a household's capacity to respond to the changing environment. The inequality and development over the period can also be measured by mobility.

According to Parker and Rougier, 2001, mobility is the transition matrix, which describes the probabilities of persons moving from any one state to another state or remaining where they are. Examination of mobility allows us to have insights into the working of the economic process over time and to understand the causes of poverty and be able to interpret the different aspects of economic status. It is important to examine mobility in the context of chronic poverty. Mobility is an indicator for the households to exit poverty and perhaps have low probability of re-entry into poverty. Income mobility assumes importance in the context of income inequality for; simultaneous increase in these two measures need not lead to adverse consequences due to the fact that long run income inequality could actually be lower. If on the other hand, an increase in income inequality is accompanied by a decline in mobility, it could have adverse consequences in the long run.

The literatures on the income mobility have become quite extensive. The earlier literatures thoroughly insight the transition approaches to mobility measure, welfare measurement and

measurement error approach to mobility. Karl and Pope (1984) observed interesting immobility in that the pattern of movement from the top deciles is quite different than that from other positions in the distribution. However, they did not find any individual characteristic to which this relative lack of movement might be attributed except being in particular deciles per se. Rosen (1985) argued that if there is sufficient income mobility; one need not be overly concerned about how unequally incomes are distributed. Thus, an income regime with a higher level of income inequality may well be preferred because it can lay claim to greater income mobility. Slesnick (1986) has shown that in each year society is upwardly mobile relative to the earlier distribution in United States. Atkinson and Bourguignon (1992) viewed the income mobility implies a transition that links an initial distribution to a final distribution and then a mobility index typically describes this transition process. Jarvis and Jenkins (1998) have shown that there is much mobility in household net income from one year to the next in Britain. There is some evidence of greater mobility for those in the tails of the income distribution relative to the middle, and for elderly persons compared to non-elderly persons. Gardiner and Hills (1999) observed the evidence is equivocal, but even if income mobility is now greater than it was at the earlier, albeit for a restricted groups, the size of the increase is not enough to do any more moderate the effects of the rise in cross-sectional inequality. Formby, et al. (2004) supported that income mobility must also be weighed when comparing income-generating regime in different societies. Woolard and Klasen (2004) found that demographic changes and employment changes account for a most of the mobility observed which is related to rapidly shifting household boundaries and a very volatile labor market in an environment of high unemployment. Kapitany and Molnar (2004) found the stagnation of inequality was coupled with decreasing mobility, which may account for the stabilization of inequality. This process may be observed in every income and expenditure deciles. Immobility was particularly strong at the ends of the income and expenditure scales. The poor had less chance to improve their position, and even the commencement of economic growth could not increase their mobility. The richest families were able to stabilize their position permanently.

Dardanoni (1993) argued that the measurement of mobility should be undertaken by first exploring mobility's implications for social welfare. Field and Ok (1996) have shown that mobility due to the transfer of income within a given structure and mobility due to economic growth or contraction. Fields and Ok (1999) have shown that there was a broad-based increase in

income movement in the United States between the 1970s and 1980s. Ding and Wang (2008) have shown that the household income mobility in China remained at a high level from 1989 to 2000, which is due to an exchange process accompanied by high growth.

Economic mobility in India has been examined variously by Swaminathan (1988), Ghia (1988) and Ghia and Deolalikar (1993) find limited wealth mobility in a set of Tamil Nadu villages during the period 1977 to 1985. Epstein (1973) and Gough (1987) find little evidence of occupational mobility in these villages. Pal and Kynch (2000) examined the nature and characteristics of occupational change and mobility in rural India. They have shown that success in changing occupation depends crucially on socially constructed 'status' – being older, male, from larger farming families or having higher schooling experience. They also have demonstrated the effects of regional diversity, levels of prosperity and different patterns of employment between agricultural and non-agricultural activities. Mukund, K. (2001) has explored the dynamics of social mobility in pre-colonial south India. He found that a significant degree of mobility was to be not seen in this society and neither at the individual nor at the corporate level there an acceptance of an immutable caste system and social ranking. The caste system was highly complex, with many intricate strands which linked the social group with their economic base. The interaction of these factors allowed for a degree of intra- and inter-caste mobility which the static understanding of caste does not accommodate. Sanjay Kumar and et al. (2002) have shown that social mobility in India is neither particularly fluid, as evidenced by the large class inequalities, nor showing great signs of becoming more. Mitra, A. (2006) have shown that transfer of labor from the informal to the formal sector does not seem to receive much empirical support, movements within the informal sector are substantial and prove to be beneficial. The downward mobility are much fewer in number than upward mobility. The duration of migration does not seem to have any significant effect on the expenditure per capita, but it shows a positive influence on the probability to save. Rajeswari and Suhas (2008) found that while caste is not strongly associated with occupational mobility in general, it certainly important for upward mobility through extend of mobility is different among different castes. The maratha-kunbis and dalits are the greatest beneficiaries of upward mobility through there are difference in the mode of their journey. The other backward classes lag behind these two and some castes among them even show stagnation as far as mobility is concerned.

In this paper, we used a unique ARIS/ REDS surveys 1999 and 2007 data set for rural India to determine the reasons and magnitude of income, consumption and income mobility. The economic mobility has estimated for the land classes, ICRISAT agro-climate zones, different region such as east, south west and north, consumption classes, income quintiles, agricultural profit classes, assets classes, caste groups and gender groups. There exists wide income, consumption and asset diversity among different classes.

This paper is organized in five sections. Section II describes NCAER ARIS/REDS the data base. Section III explains the methodology and section IV presents the empirical results. Section V presents conclusion of the paper.

II. Data

We use the last two rounds (1999 and 2007)¹ of the NCAER ARIS and Rural Economic and Demographic (REDS) surveys that form a village and household data base providing consistent information on 242 villages spread across 16 states in India. The first round of the survey for which complete village and household information is available is the 1971 round of the Additional Rural Incomes Survey (ARIS), which includes 4527 households in 259 villages which was meant to be representative of the entire rural population of India residing in 17 major states. The original sampling frame was a stratified design that included the following:

- (i) One district in each state that was part of the Intensive Agricultural District Programme (IADP), an extension and input provision programme placed in areas thought to have high potential for crop productivity growth.
- (ii) One district from each state that was covered by the Intensive Agricultural Area Programme (IAAP).
- (iii) A random sample of other districts. There are 100 districts represented in the 1971 ARIS.

In 1982, 250 of the original 259 villages were revisited (the state of Assam was excluded due to local political disturbances rendering survey activity impossible) and 4979 household surveyed, approximately two-thirds of which were the same as in 1971. In 1999, all of the 1971 villages

¹ The data collection for the last round of the REDS survey started in 2006, which is why it is normally referred to as the 2006 round. However, for most states the household schedule that contains the agricultural data was collected in 2007, with the exception of Kerala, where it was collected in 2008.

were surveyed, but excluding the 8 sample villages from Jammu and Kashmir (again owing to problems of local insurgency). In this survey round, all of the surviving households in the 1982 survey were surveyed again, including in this round all split-off households residing in the same village, plus a small random sample of new households. Because of household division and the new sample design incorporating all village-resident male 1982 household surveyed household members, the number of households in the 1999 round increased to 7474. The current round of 2006 (agricultural seasons 2006-2009) has a sample size of 8659 households from 242 villages and it includes all of the households surveyed in 1999 and the split-off households residing within these villages. Each village has approximately 8 new randomly selected households. The panel data set encompassing 1999 and 2007 rounds of the survey includes 5885 households.

There have been two features of the current survey. First, the households were surveyed at the end of each cropping season. This is particularly relevant for cultivating households as the reporting of both inputs and outputs become more reflective of the season just passed. Second, the cost of cultivation is collected at the level of fragments rather than at the level of a crop. A fragment is a unit of cultivation. All outputs and inputs are collected at the level of fragments. The data have been collected at the level of fragments as they represent the unit of cultivation.

In all the tables reported below we use real prices, rather than nominal prices with 1999 as a base period. We used the state level consumer price indices for rural agricultural labor. Since the survey was rolled out over more than two years, we matched the survey period in each state with the average of the respective months of the CPI for rural agricultural workers.

III. Methodology

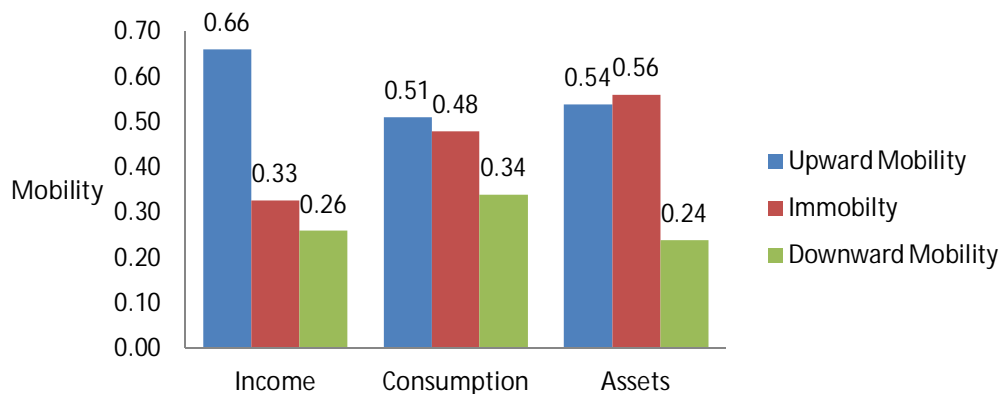
This paper attempt is to examine the mobility of households with respect to time-independence; positional movement, and directional income, consumption and assets movement using transition matrices. Transition matrices are most intuitive tools to comprehend mobility and are based on Shorrocks' (1978) measures of mobility. These matrices classify the income units into fixed categories in each time period. In this paper, income, consumption and income units are defined as quintiles. Cross-tabulations of the frequency distribution of households in each quintile with the base-year quintile determine the row. A similar cross tabulation with final-year quintile determines the column. Using this methodology the study can determine the movement of a

family along the income distribution over time. It also determines the existing immobility if any. It also can say that there is a perfect immobility if all households remain in the same quintile in each of these accessible years, i.e., the diagonal elements of the transition matrix. Above triangle of the matrix shows the upward mobility and lower triangle shows the downward mobility. If a significant majority of entries are above the diagonal rather than below the study can conclude that upward mobility is greater than downward mobility between the two years examined.

IV. Empirical Results

We estimated a Shorrocks measure of income mobility, which is an average, across all income, of the conditional probabilities of an individual moving out of their current income class. Similarly we estimated consumption and assets mobility. We also report our measure of upward mobility, downward mobility and immobility. This mobility have estimated for the land classes, ICRISAT agro-climate zones, different region such as east, south west and north, consumption classes, income quintiles, agricultural profit classes, assets classes, caste groups and gender groups. The values of income, consumption and assets are at per capita term. We estimated these for panel households in both the rounds 1999 and 2007. The income, consumption and assets mobility has shown in the figure 1.

Figure 1: Income, Consumption and Assets mobility for panel households

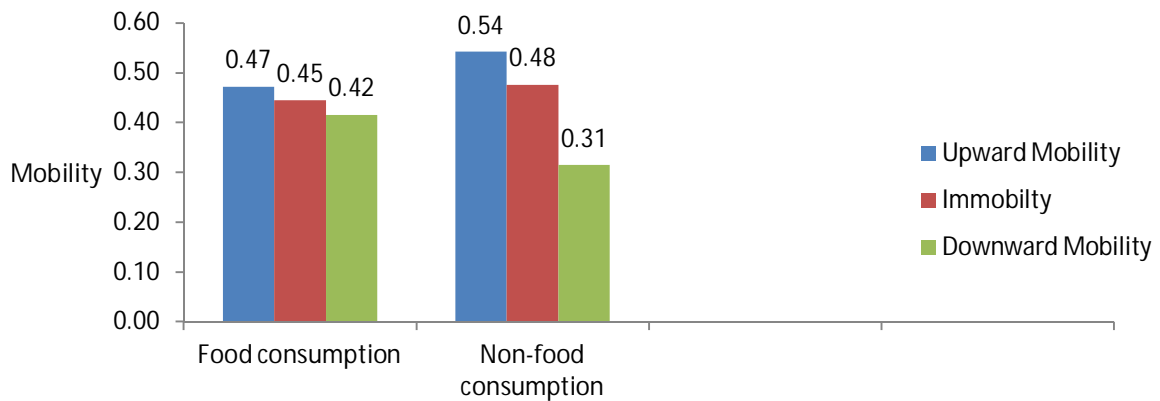


In figure 1, the transition probability of upward income mobility of rural household is 0.66 during both periods which is higher than consumption and assets. This shows that change in income of the rural households increase more than change in consumption and assets. The

upward consumption mobility increases less than income and assets. The probability of downward consumption mobility of rural household is 0.34 and this is more than income and assets. The assets of rural households are more immobile than consumption and income. Here we find that change in income and assets substantial, but consumption change relatively small.

The food and non-food consumption mobility have given in the figure 2. The downward mobility of food consumption is higher. This shows that the change in food consumption increased less than non-food consumption.

Figure 2: Food and non-food consumption mobility for Panel households



The income, consumption and assets mobility of land classes such as landless, marginal, small, medium and large have shown in the figure 3, 4 and 5 respectively. The upward mobility of income and assets for medium and large farmers has increased higher than other land classes. The downward mobility of income and assets is negligible for medium and large farmers. The probability of upward consumption mobility of each land classes except large farmers varies between 0.43 to 0.52 and the probability of large farmers is 0.65. The large farmers are the dominant classes in term of consumption growth. Overall the results show that the landless and marginal farmers are the most vulnerable classes in terms of change in income, consumption and assets.

Figure 3: Income Mobility for Land Categories

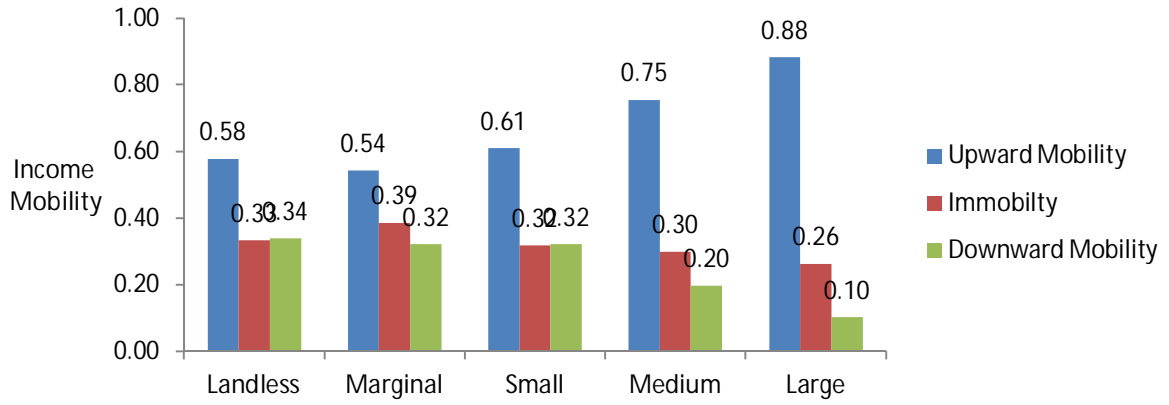


Figure 4: Consumption Mobility for Land Categories

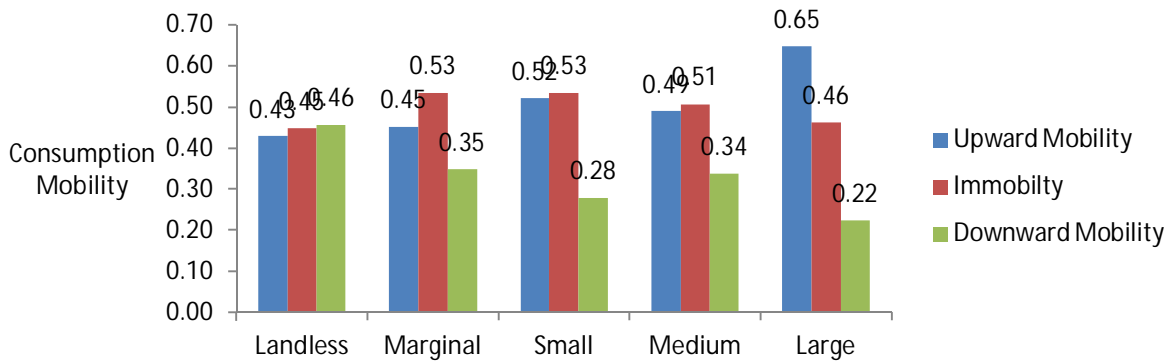
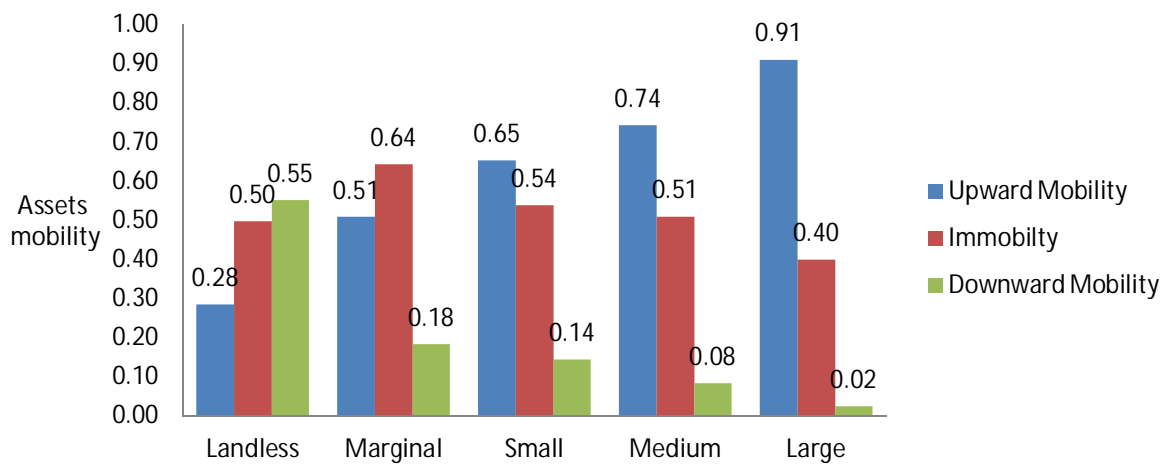


Figure 5: Assets Mobility for Land Categories



The income, consumption and assets mobility of different agro-climatic zones such as humid, semi-arid temperate, semi-arid tropic and arid have shown in the figure 6, 7 and 8 respectively. Here we try to find that the income, consumption and assets of rural households may change due to different rain fall zones. The transition probability of upward income mobility varies from 0.63 to 0.68 between agro-climatic zones. The transition probability of upward assets mobility is between 0.52 to 0.54. These results show the reasonably consistent in change in income and assets between agro-climatic zones for rural households in India. The consumption mobility of semi-arid temperate is greater than the other agro-climatic zones. The downward mobility of consumption is higher than the income and assets. Overall the results reveal that income and assets of households have changed more compared to consumption in different agro-climatic zones.

Figure 6: Income Mobility for ICRISAT Agro-climatic zones

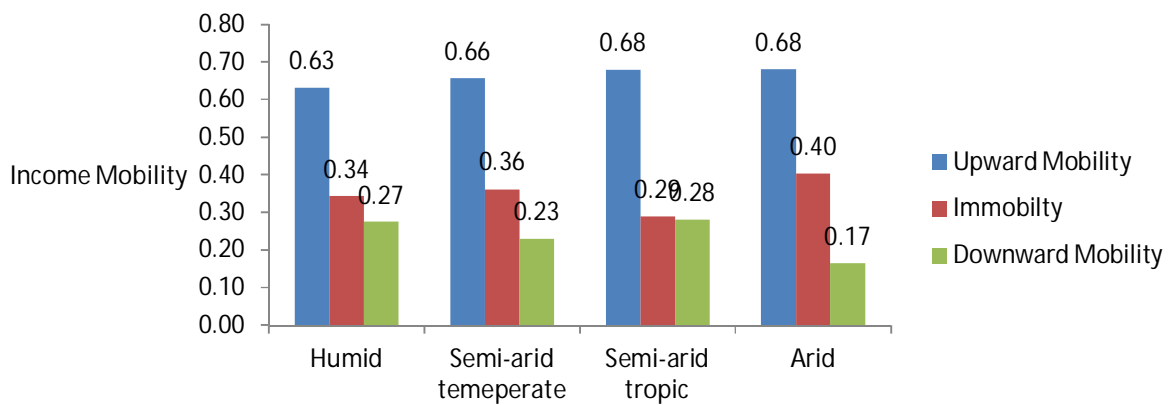


Figure 7: Consumption Mobility for ICRISAT Agro-climatic zones

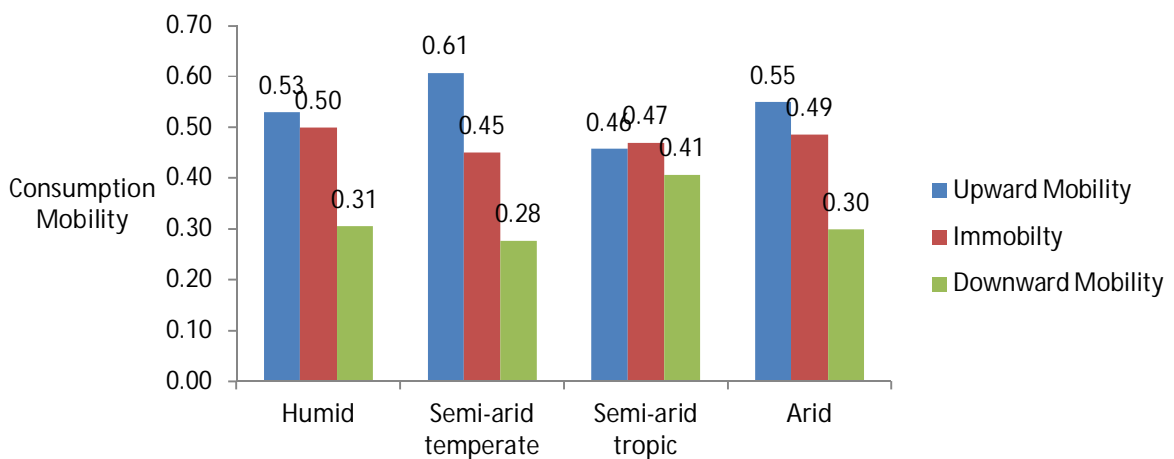
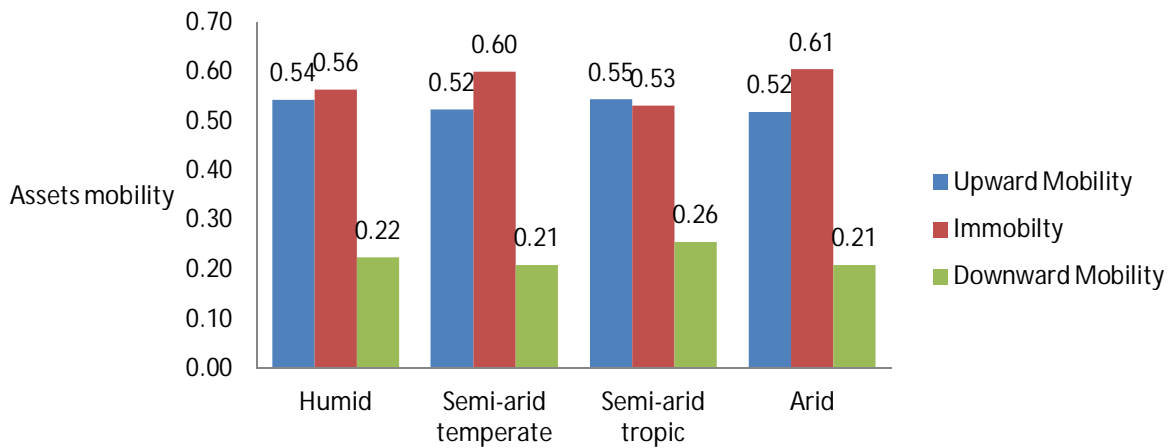


Figure 8: Assets Mobility for ICRISAT Agro-climatic zones



The mobility in terms of income, consumption and assets of different regions such as north, east, south and west are presented in the figure 9, 10 and 11. The income, consumption and assets upward mobility of western region of rural India is higher than the other regions. The upward income and consumption mobility of eastern region is the lowest, and the upward assets mobility of southern region is the low compared to other regions. The downward mobility of income and assets are lower than consumption in all the regions. Also we find that the immobility of assets and consumption is larger than income. These results suggest that there is an income, consumption and assets diversity between regions in rural India and the western region is a richest among all the regions.

Figure 9: Income Mobility for Regions

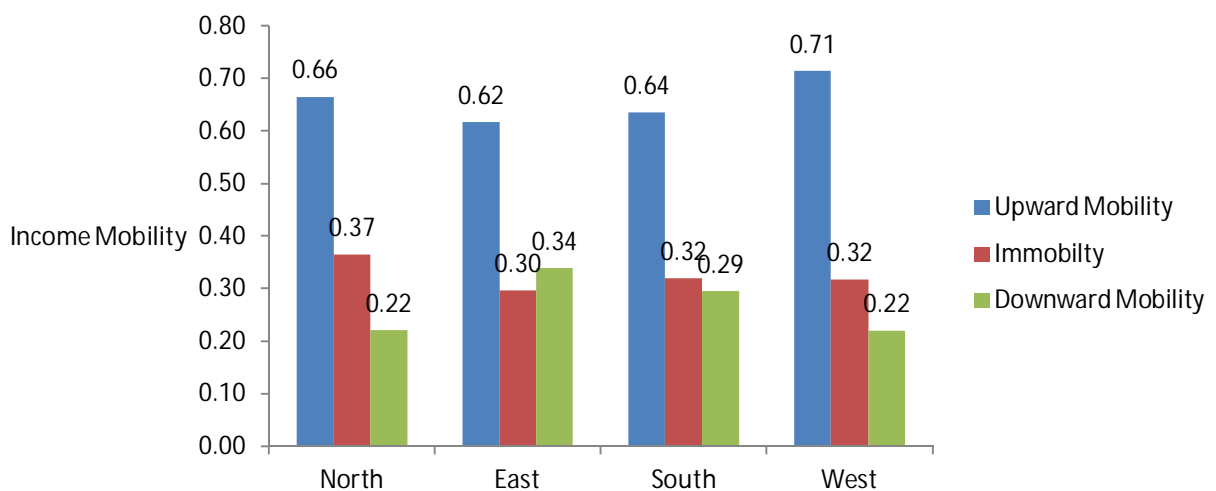


Figure 10: Consumption Mobility for Regions

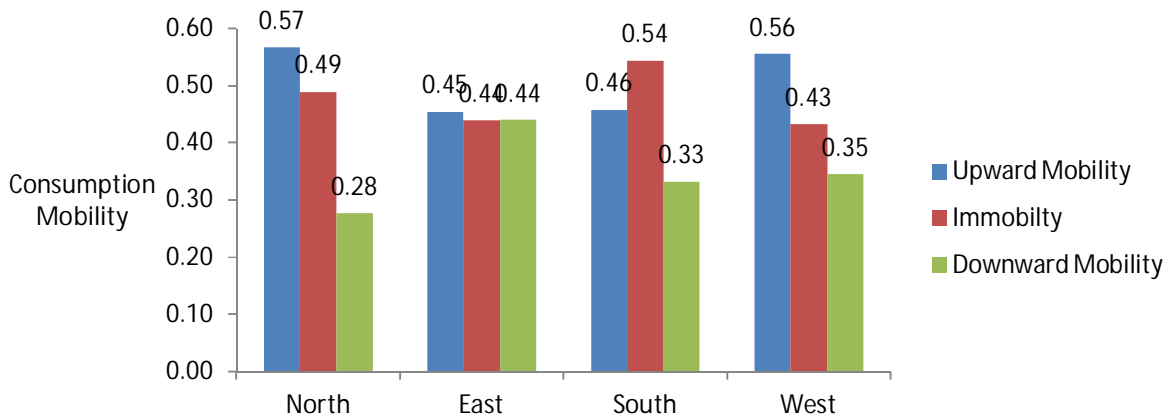
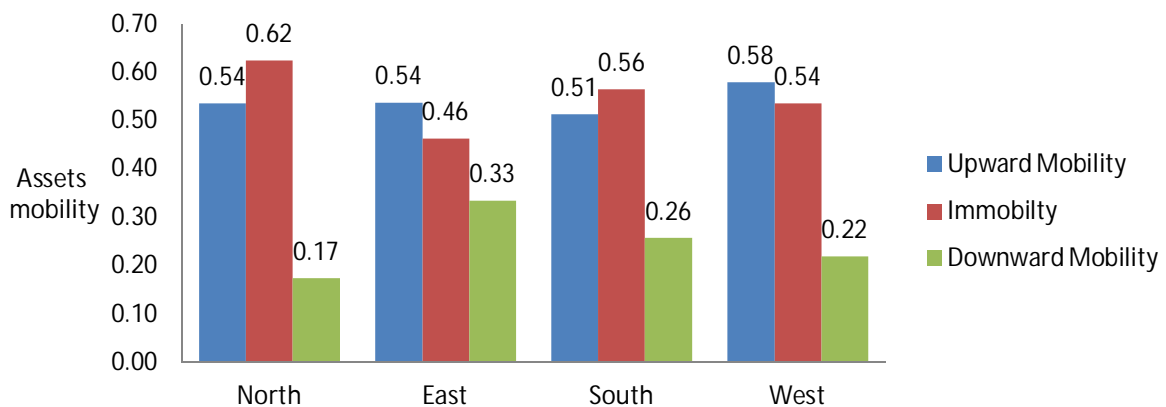


Figure 11: Assets Mobility for Regions



It is very important to see the mobility between different caste groups in rural India such as scheduled caste (SC), scheduled tribes (ST), other backward caste (OBC) and other upward caste (OC). The mobility of income, consumption and assets of these groups is given in figure 12, 13 and 14. The upward income mobility of all caste groups is more than the consumption and assets upward mobility. The downward consumption mobility is higher than income and assets for all the caste groups. The scheduled caste households are most vulnerable classes in terms of income and assets. The upward consumption mobility of scheduled caste is slightly higher than the scheduled tribes. The assets immobility is very higher for the scheduled castes compared to the other caste groups. The results show that the other backward caste and upper caste are dominant class in the rural households. The income, consumption and assets of these classes have changed higher than scheduled caste and scheduled tribe.

Figure 12: Income Mobility for Caste groups

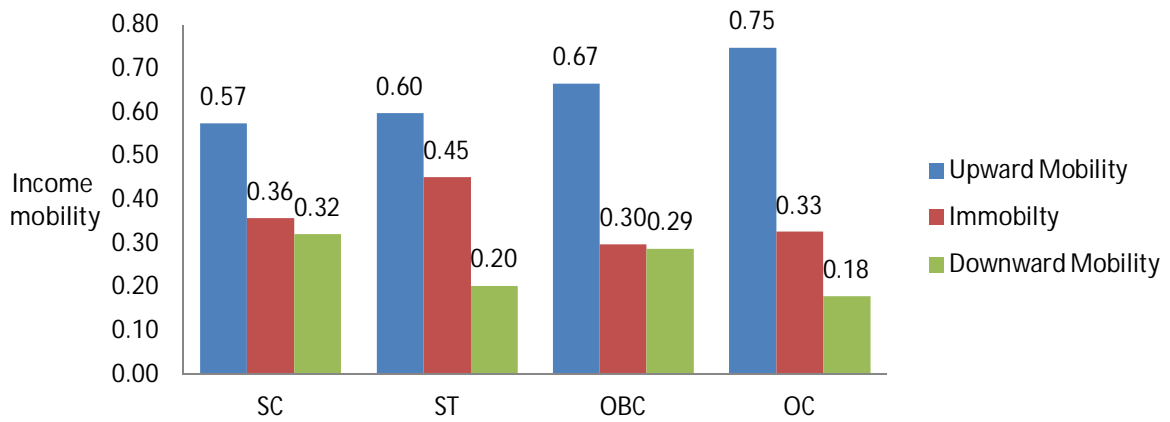


Figure 13: Income Mobility for Caste groups

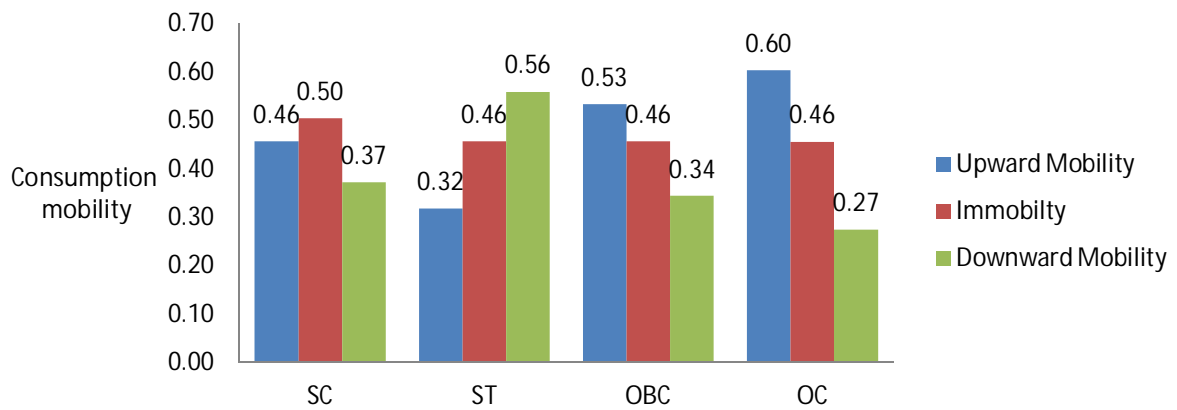
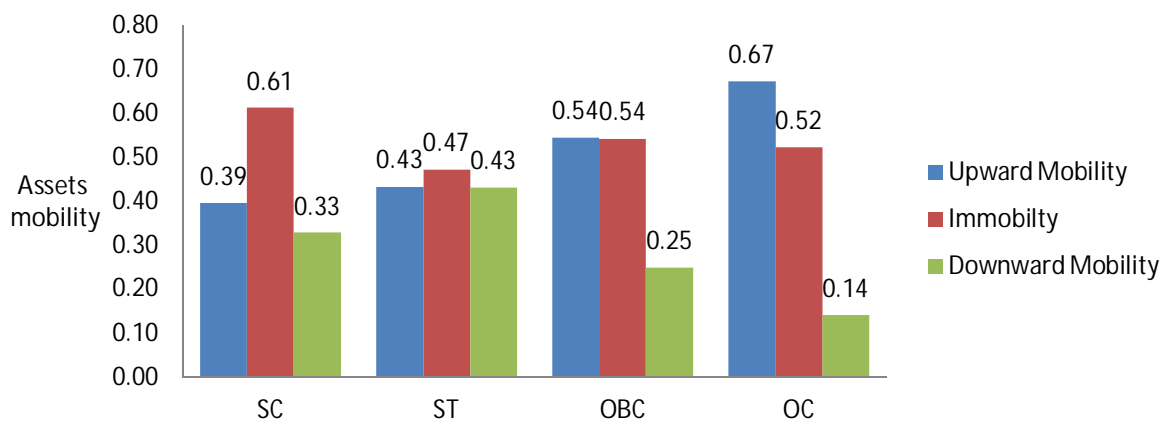


Figure 14: Assets Mobility for Caste groups



The mobility of male and female headed household and proportions of female (here we classified proportions of female into four quartiles) in household have given in the figure 15, 16 and 17. The transition probability of upward income mobility of male and female headed household is 0.65 and 0.73 respectively. Similarly the upward mobility of consumption and assets for female headed household is higher than male headed household. It seems that the change in income, assets and consumption of female headed households are higher than the male headed households. This reveals that female headed households are better off than male headed households. We try to find the mobility in terms of income, consumption and assets if proportion of female changes in a household. That's why we divided the proportions of female household into four quartiles. Interestingly we find that if the proportion of female in household increases the story is mixed. This suggests that the female households are contributing income of the households. That's why the mobility in income, consumption and assets are not making any difference if the proportion of female household changes.

Figure 15: Income Mobility for Gender groups

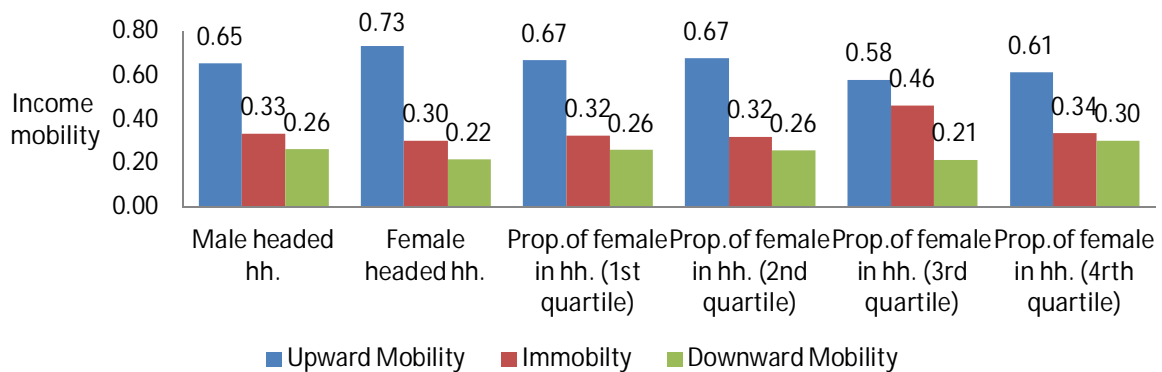


Figure 16: Consumption Mobility for Gender groups

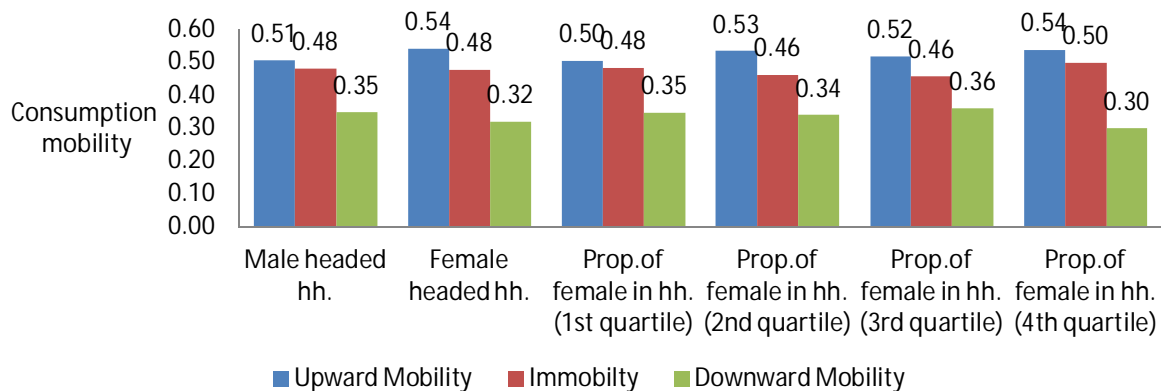
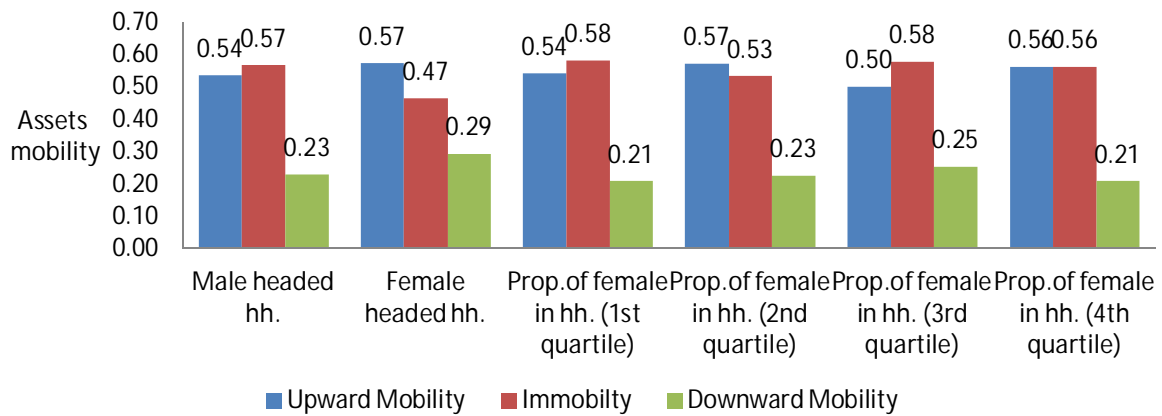


Figure 17: Assets Mobility for Gender groups



In figure 18, 19 and 20, we classified the households into four quartiles based on their agricultural profit and the highest quartile is the richest agricultural profit group. Here we find the income, consumption and assets mobility for each agricultural profit groups. The results show that highest profit classes are most dominant class and the upward mobility of income, consumption and assets for them have increased more than other profit classes during two rounds. Interestingly we find that the upward mobility of income and consumption for lowest agricultural profit classes are more than the second and third agricultural profit classes. This clearly suggests that the lowest profit classes are not dependent on agriculture and they may be involved in the non-agricultural activities.

We find the consumption and assets mobility for income classes, income and assets mobility for consumption classes, and finally income and consumption mobility for assets classes. The results have shown in the appendix A. We find that mobility increases for higher income, consumption and assets classes. The lowest quartiles groups are more vulnerable because the mobility of these groups changes lower than richest quartile groups.

Figure 18: Income Mobility for Profit Categories

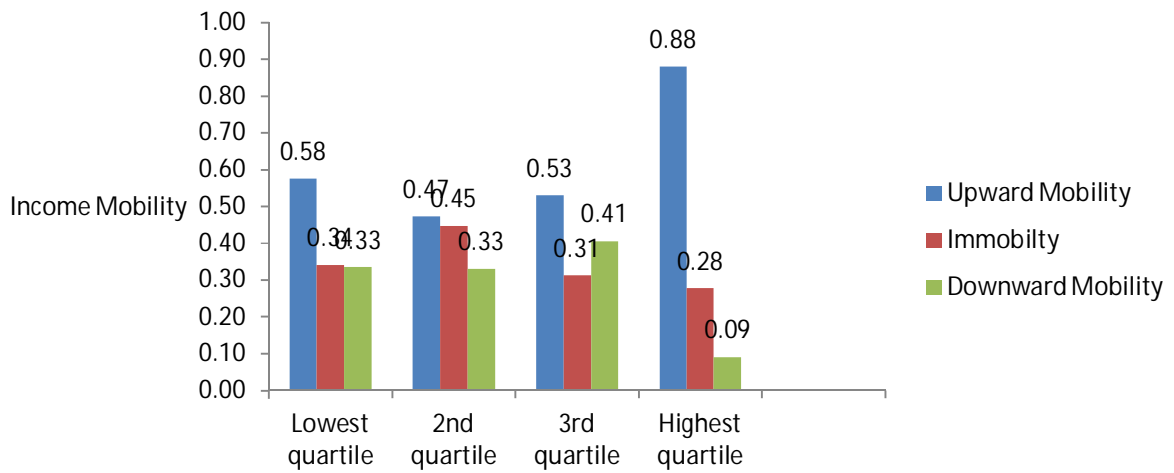


Figure 19: Consumption Mobility for profit classes

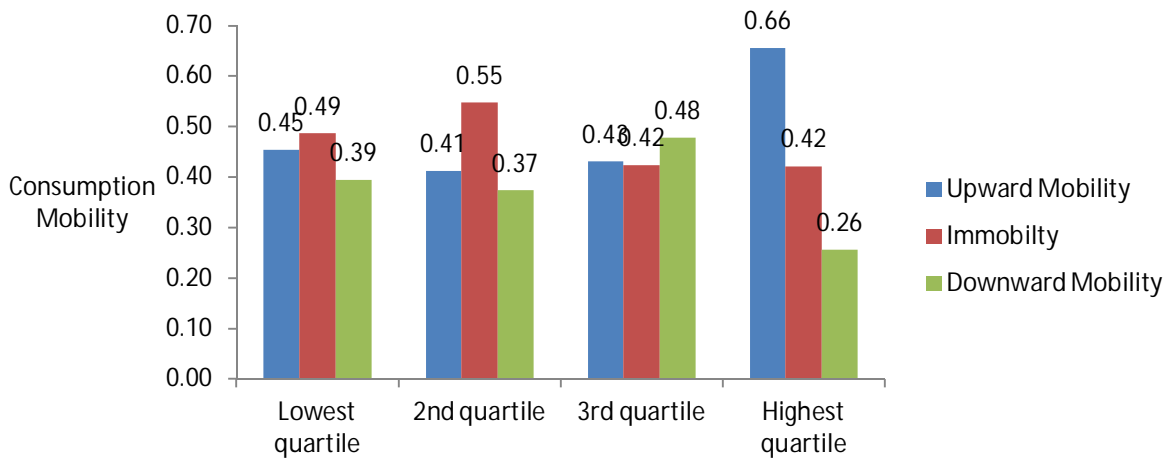
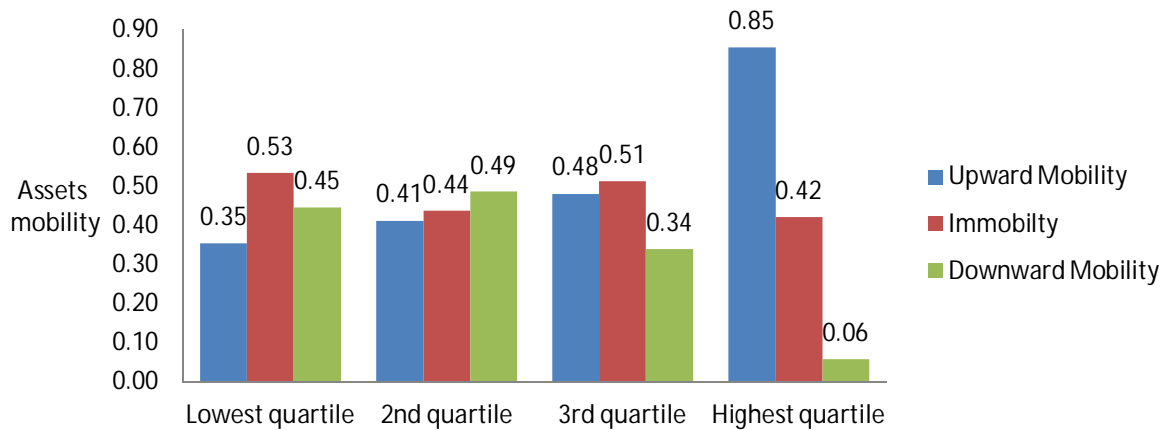


Figure 20: Assets Mobility for profit classes



V. Conclusion

This paper examined the mobility of rural households in terms of income, consumption and assets movement using transition matrices. Transition matrices are most intuitive tools to comprehend mobility and are based on Shorrocks's (1978) measures of mobility. Economic mobility is a significant consequence of income inequality and growth. In this paper, we used a unique ARIS/REDS surveys 1999 and 2007 data set for rural India to determine the reasons and magnitude of income, consumption and assets mobility. The economic mobility has estimated for the land classes, ICRISAT agro-climate zones, different regions such as east, south west and north, consumption classes, income quintiles, agricultural profit classes, assets classes, caste groups and gender groups. There exists wide income, consumption and asset diversity among different classes.

We find that income and asset mobility changes substantial, but consumption mobility change relatively small. The results show that there is a more upward mobility than downward mobility over the time periods. The upward mobility of income and assets are larger than the consumption mobility. The non-food consumption mobility is higher than food consumption mobility. The results from upward income, consumption and asset mobility of different land class's show the mobility of landless and marginal farmers has increased, but it is less than the larger farmers. The asset mobility is very lesser than income and consumption mobility for landless and marginal farmers. The arid-agro climatic zones have more income mobility, the semi-arid climatic zones have larger consumption mobility and the assets mobility within different agro-climatic zones is quite consistent. The income, consumption and assets mobility of west region is the largest. The findings show that the upper caste and other backward castes are the most dominant caste than SC and ST households. They have more change in income, consumption and asset over the periods. We find that the female headed households are doing better and their economic mobility in terms of income, consumption and assets are increasing over time. The economic mobility of different consumption, income, profit and assets classes shows that the largest quintiles classes have more upward mobility than lowest quintile classes in income, consumption and assets.

References

- Atkinson, A.B., F. Bourguignon and C. Morrison (1992), "Empirical Studies of Earnings Mobility", Harwood Academic Publishers, Chur.
- Dardanoni, V. (1993), "On measuring social mobility", *Journal of Economic Theory*, 61, 372–394.
- Ding, N. and Y. Wang (2008), "Household income mobility in China and its decomposition", *China Economic Review*, 19, 373-380.
- Epstein, S. (1973), "South India: Yesterday, Today, and Tomorrow. Mysore Villages Revisited", (London: Macmillan).
- Fields, G. S. and E. A. Ok (1996), "The meaning and measurement of income mobility", *Journal of Economic Theory*, 71, 349–377.
- Fields, G. S. and E.A. Ok (1999), "Measuring movement of income", *Economica*, 66, 455–471.
- Formby, J.P., W.J. Smith and B. Zheng (2004), "Mobility measurement, transition matrices and statistical inference", *Journal of Econometrics*, 120, 181-205.
- Gardiner, K. and J. Hills (1999), "Policy implications of new data on income mobility", *The Economic Journal*, Vol. 109, No. 453, 91-111.
- Ghia, R. (1988), "Income mobility in rural India", *Economic Development and Cultural Change*, Vol. 36 (2), 279-302.
- Gaiha, R. and A. Deolalikar (1993), "Persistent, Expected and Innate Poverty: Estimates for Semi-Arid Rural India, 1974-1984", *Cambridge Journal of Economics*, vol. 17(4).
- Gough, Kathleen (1987), "Socio-Economic Change in Southeast India, 1950s to 1980s", *Journal of Contemporary Asia*, Vol. 17, No. 3.
- Jarvis, S. and S. Jenkins (1998), "How much income mobility is there in Britain?", *Economic Journal*, 108, 428–443.
- Kapitany, Z. and G. Molnar (2004), "Inequality and Income Mobility in Hungary, 1993-1998", *Europe-Asia Studies*, 56, 8, 1109-1129.
- Kearl, J.R. and C.L. Pope (1984), "Mobility and Distribution", *The Review of Economics and Statistics*, Vol. 66, No. 2, 192-199.
- Mitra, A. (2006), "Labour market mobility of low income households", *Economic and Political Weekly*, May 27, 2123-2130.
- Mukund, K. (2001), "The dynamics of social mobility in pre-colonial south India: Some reflections", *Review of Development and Change*, Vol. VI/I, January-June, 17-27.

- Parker, S.C. and J. Rougier (2001), "Measuring Social Mobility as Unpredictability", *Economica*, New Series, Vol. 68, No. 269, 63-76.
- Rajeswari, D. and P. Suhas (2008), "Occupational mobility: How much does caste matter?", *Economic and Political Weekly*, August 23, 61-70.
- Rosen, H.S. (1985), *Public Finance*, Irwin, Homewood, IL.
- Sanjay Kumar, H. Antony and H. Oliver (2006), "Changing patterns of social mobility", *Economic and Political Weekly*, October 5, 4091-4096.
- Shorrocks, A. F. (1978), "The measurement of mobility", *Econometrica*, 46, 1013–1024.
- Slesnick, D. T. (1986), "Welfare distributional change and the measurement of social mobility", *The Review of Economics and Statistics*, Vol. 68, No. 4, 586-593.
- Swaminathan, M. (1988), "Growth and Polarization: Changes in Wealth Inequality in a Tamil Nadu Village", *Economic and Political Weekly*, October 22.
- Woolard, I. and S. Klasen (2004), "Determinants of Income Mobility and Household Poverty Dynamics in South Africa", *IZA Discussion Paper*, No. 1030, 1-37

Appendix A

Figure A1: Consumption Mobility for Income classes

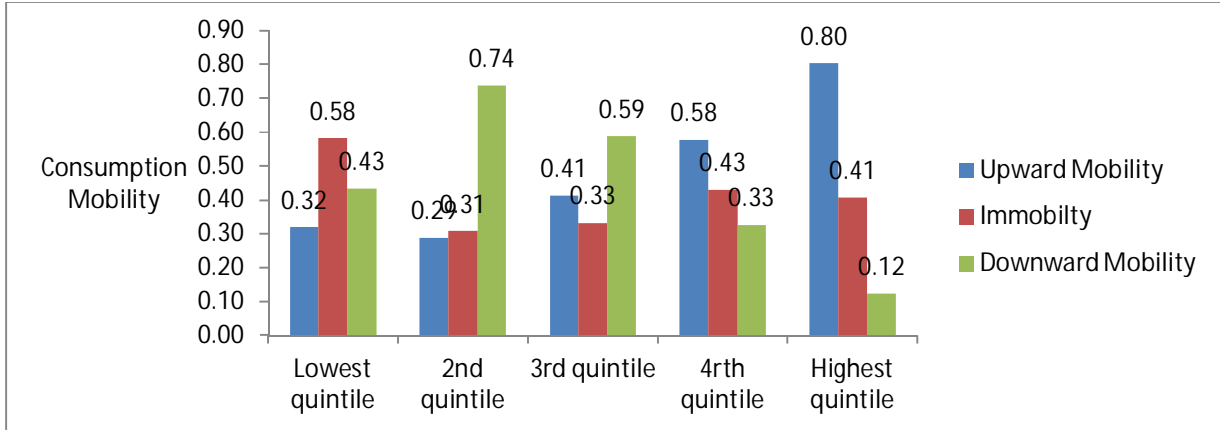


Figure A2: Assets Mobility for Income classes

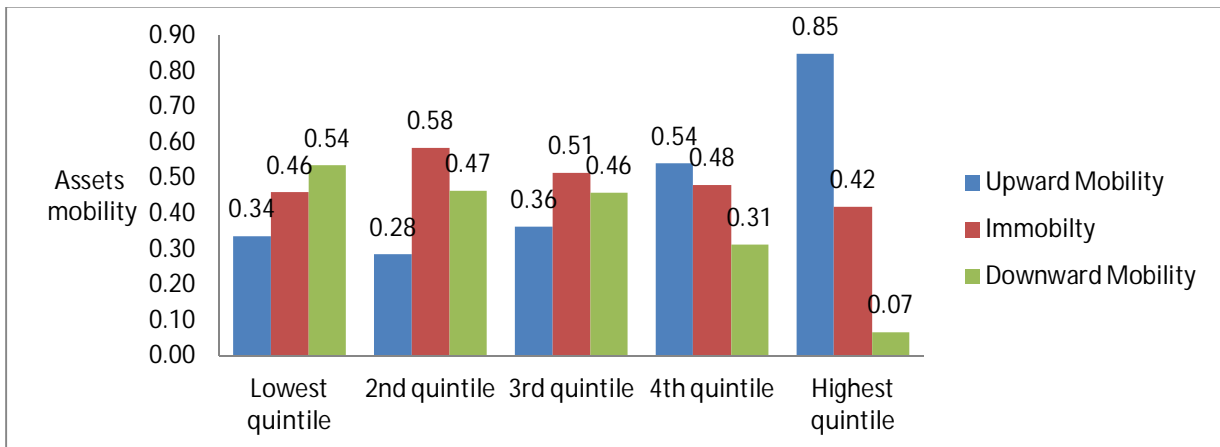


Figure A3: Income Mobility for Consumption Classes

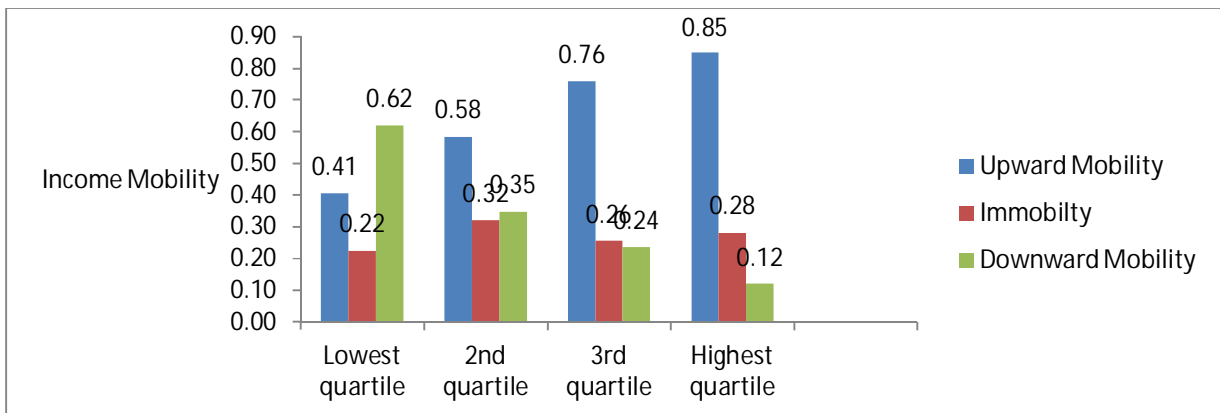


Figure A4: Assets Mobility for consumption classes

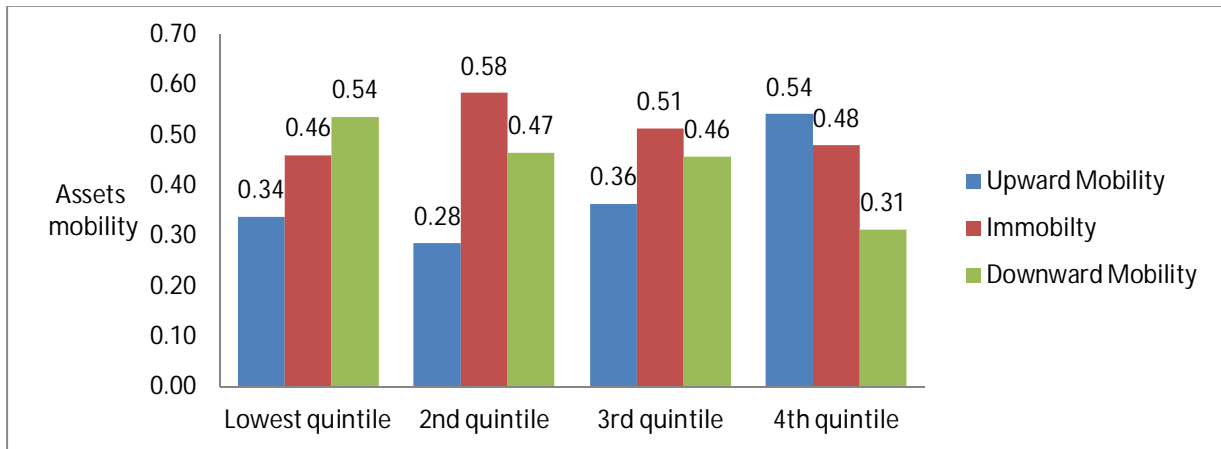


Figure A5: Income Mobility for Assets Categories

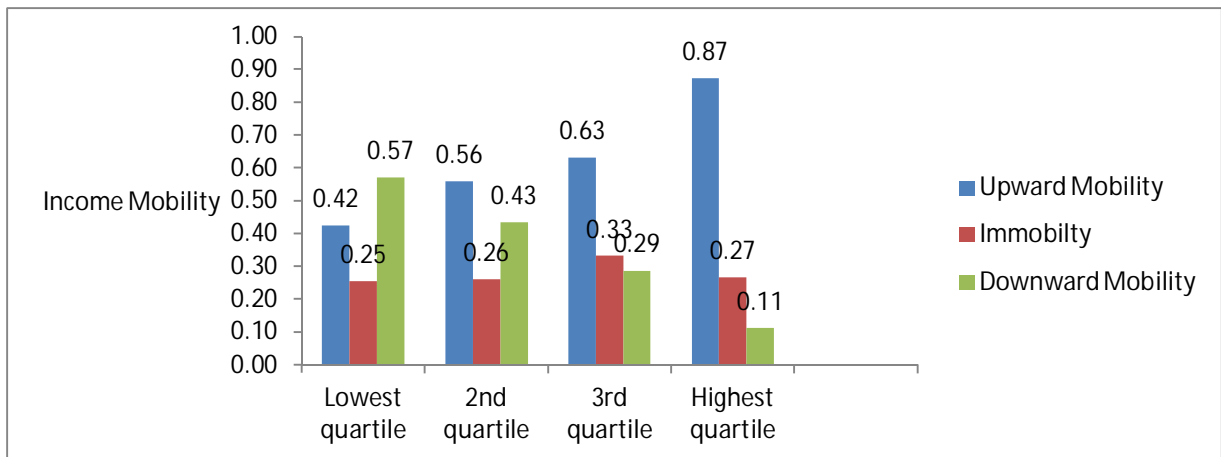
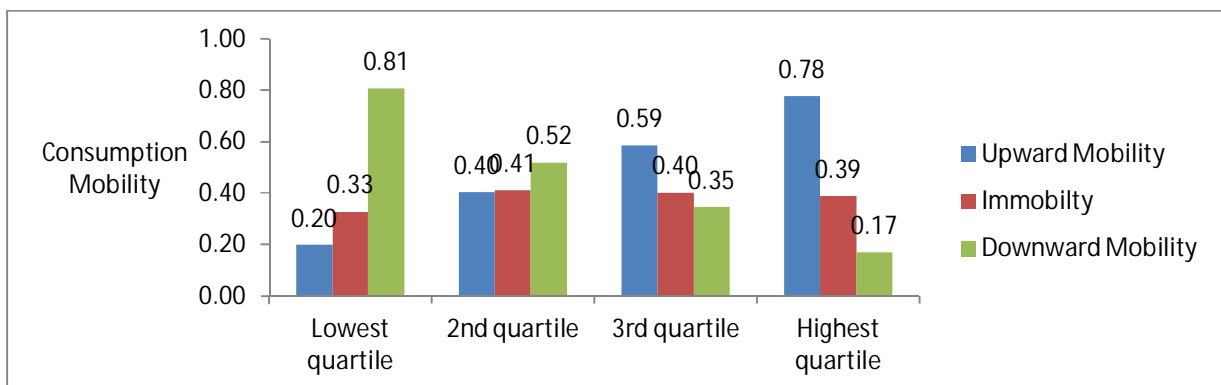


Figure A6: Consumption Mobility for assets classes



Appendix B

Table B1: Income mobility of panel households

Transition metrics for all panel households						
2006						
1999	Lowest Quintile	2nd Quintile	3rd Quintile	4th Quintile	Highest Quintile	Total
Lowest Quintile	0.0935	0.1606	0.2489	0.2370	0.2600	1,177
2nd Quintile	0.1003	0.1640	0.2617	0.2498	0.2243	1,177
3rd Quintile	0.0943	0.1283	0.1878	0.2829	0.3067	1,177
4th Quintile	0.0628	0.0874	0.1800	0.2699	0.3998	1,178
Highest Quintile	0.0553	0.0434	0.1122	0.1913	0.5978	1,176
Total	478	687	1,166	1,449	2,105	5,885
Income Mobility	0.92					
Upward Mobility	0.66					
Immobility	0.33					
Downward Mobility	0.26					

Table B2: Consumption mobility of panel households

Transition metrics for consumption class					
2006					
1999	Lowest Quintile	2nd Quintile	3rd Quintile	4th Quintile	Total
Lowest Quintile	0.3614	0.2541	0.2188	0.1658	1,472
2nd Quintile	0.2468	0.2271	0.2842	0.2420	1,471
3rd Quintile	0.1659	0.2033	0.2672	0.3637	1,471
4th Quintile	0.0959	0.1135	0.2073	0.5833	1,471
Total	1,280	1,174	1,438	1,993	5,885
Consumption Mobility	0.85				
Upward Mobility	0.51				
Immobility	0.48				
Downward Mobility	0.34				

Table B3: Assets mobility of panel households

Transition metrics for assets class					
2006					
1999	Lowest Quintile	2nd Quintile	3rd Quintile	4th Quintile	Total
Lowest Quintile	0.3295	0.3349	0.2113	0.1243	1,472
2nd Quintile	0.1352	0.3152	0.3247	0.2249	1,472
3rd Quintile	0.0700	0.1903	0.3372	0.4024	1,471
4th Quintile	0.0367	0.0864	0.1912	0.6857	1,470
Total	841	1,364	1,566	2,114	5,885
Assets Mobility	0.78				
Upward Mobility	0.54				
Immobility	0.56				
Downward Mobility	0.24				

Table B5.1: Consumption mobility of panel households (Food)

Transition metrics for food consumption					
1999	2006				
	Lowest Quintile	2nd Quintile	3rd Quintile	4th Quintile	Total
Lowest Quintile	0.4867	0.1253	0.1624	0.2256	1,804
2nd Quintile	0.3406	0.1730	0.2678	0.2186	1,139
3rd Quintile	0.2590	0.1373	0.2345	0.3691	1,471
4th Quintile	0.2291	0.0544	0.1659	0.5506	1,471
Total	1,984	705	1,187	2,009	5,885
Consumption Mobility	0.85				
Upward Mobility	0.46				
Immobility	0.48				
Downward Mobility	0.40				

Table B5.2: Consumption mobility of panel households (Non-Food)

Transition metrics for non food consumption					
1999	2006				
	Lowest Quintile	2nd Quintile	3rd Quintile	4th Quintile	Total
Lowest Quintile	0.3105	0.2649	0.2486	0.1760	1,472
2nd Quintile	0.1997	0.2391	0.2887	0.2724	1,472
3rd Quintile	0.1128	0.1997	0.3118	0.3757	1,472
4th Quintile	0.0579	0.1375	0.2355	0.5691	1,469
Total	1,002	1,238	1,596	2,049	5,885
Consumption Mobility	0.86				
Upward Mobility	0.54				
Immobility	0.48				
Downward Mobility	0.31				

Table B6.1.1: Income mobility of landless

Transition metrics for landless						
1999	2006					
	Lowest Quintile	2nd Quintile	3rd Quintile	4th Quintile	Highest Quintile	Total
Lowest Quintile	0.1190	0.1845	0.3452	0.2440	0.1071	168
2nd Quintile	0.1483	0.2331	0.3263	0.2203	0.0720	236
3rd Quintile	0.0879	0.1795	0.2271	0.3407	0.1648	273
4th Quintile	0.0631	0.1359	0.1505	0.3447	0.3058	206
Highest Quintile	0.0889	0.1111	0.1333	0.2556	0.4111	90
Total	100	173	240	280	180	973
Income Mobility	0.92					
Upward Mobility	0.58					
Immobility	0.33					
Downward Mobility	0.34					

Table B6.1.2: Income mobility of marginal farmers

Transition metrics for Marginal Farmers						
1999	2006					Total
	Lowest Quintile	2nd Quintile	3rd Quintile	4rth Quintile	Highest Quintile	
Lowest Quintile	0.1406	0.2500	0.3125	0.1719	0.1250	64
2nd Quintile	0.1351	0.2703	0.2838	0.2027	0.1081	74
3rd Quintile	0.1915	0.1702	0.2128	0.1489	0.2766	47
4rth Quintile	0.1458	0.1250	0.2708	0.1667	0.2917	48
Highest Quintile	0.0556	0.0000	0.0694	0.1250	0.7500	72
Total	39	50	69	50	97	305
Income Mobility	0.8649					
Upward Mobility	0.5428					
Immobility	0.3851					
Downward Mobility	0.3221					

Table B6.1.3: Income mobility of small farmers

Transition metrics for Small Farmers						
1999	2006					Total
	Lowest Quintile	2nd Quintile	3rd Quintile	4rth Quintile	Highest Quintile	
Lowest Quintile	0.1204	0.2037	0.1852	0.2685	0.2222	108
2nd Quintile	0.1818	0.1429	0.2987	0.2468	0.1299	77
3rd Quintile	0.1594	0.0870	0.1739	0.3478	0.2319	69
4rth Quintile	0.0816	0.0816	0.2449	0.2857	0.3061	49
Highest Quintile	0.0408	0.0612	0.1020	0.2449	0.5510	49
Total	44	46	72	98	92	352
Income Mobility	0.9315					
Upward Mobility	0.6102					
Immobility	0.3185					
Downward Mobility	0.3213					

Table B6.1.4: Income mobility of medium farmers

Transition metrics for Medium Farmers						
1999	2006					Total
	Lowest Quintile	2nd Quintile	3rd Quintile	4rth Quintile	Highest Quintile	
Lowest Quintile	0.0603	0.1293	0.2931	0.2500	0.2672	116
2nd Quintile	0.0128	0.0897	0.1923	0.3974	0.3077	78
3rd Quintile	0.0789	0.0789	0.1184	0.3026	0.4211	76
4rth Quintile	0.0588	0.0706	0.1412	0.2706	0.4588	85
Highest Quintile	0.0526	0.0211	0.1053	0.1684	0.6526	95
Total	24	36	80	122	188	450
Income Mobility	0.9521					
Upward Mobility	0.7549					
Immobility	0.2979					
Downward Mobility	0.1972					

Table B6.1.5: Income mobility of large farmers

Transition metrics for Large Farmers						
1999	2006					Total
	Lowest Quintile	2nd Quintile	3rd Quintile	4rth Quintile	Highest Quintile	
Lowest Quintile	0.0202	0.0101	0.0606	0.1313	0.7778	99
2nd Quintile	0.0385	0.0128	0.0769	0.2692	0.6026	78
3rd Quintile	0.0213	0.0106	0.0532	0.1702	0.7447	94
4rth Quintile	0.0290	0.0435	0.0942	0.1377	0.6957	138
Highest Quintile	0.0264	0.0088	0.0352	0.1057	0.8238	227
Total	17	11	38	93	477	636
Income Mobility	0.9881					
Upward Mobility	0.8848					
Immobility	0.2619					
Downward Mobility	0.1033					

Table B6.2.1: Consumption mobility of landless

Transition metrics for Landless					
1999	2006				Total
	Lowest Quintile	2nd Quintile	3rd Quintile	4rth Quintile	
Lowest Quintile	0.4969	0.2267	0.1646	0.1118	322
2nd Quintile	0.3213	0.1805	0.2744	0.2238	277
3rd Quintile	0.2661	0.1927	0.2569	0.2844	218
4rth Quintile	0.1824	0.1689	0.2365	0.4122	148
Total	334	190	220	221	965
Consumption Mobility	0.8845				
Upward Mobility	0.43				
Immobility	0.45				
Downward Mobility	0.46				

Table B6.2.2: Consumption mobility of marginal farmers

Transition metrics for Marginal					
1999	2006				Total
	Lowest Quintile	2nd Quintile	3rd Quintile	4rth Quintile	
Lowest Quintile	0.3583	0.3083	0.2583	0.0750	120
2nd Quintile	0.3878	0.2449	0.1837	0.1837	49
3rd Quintile	0.1552	0.3103	0.1897	0.3448	58
4rth Quintile	0.0385	0.0385	0.1154	0.8077	78
Total	74	70	60	101	305
Consumption Mobility	0.7998				
Upward Mobility	0.45				
Immobility	0.53				
Downward Mobility	0.35				

Table B6.2.3: Consumption mobility of small farmers

Transition metrics for Small					
1999	2006				Total
	Lowest Quintile	2nd Quintile	3rd Quintile	4th Quintile	
Lowest Quintile	0.3143	0.2571	0.2476	0.1810	105
2nd Quintile	0.1939	0.2959	0.3367	0.1735	98
3rd Quintile	0.1772	0.1266	0.3291	0.3671	79
4th Quintile	0.0147	0.1029	0.2206	0.6618	68
Total	67	73	100	110	350
Consumption Mobility	0.7996				
Upward Mobility	0.52				
Immobility	0.53				
Downward Mobility	0.28				

Table B6.2.4: Consumption mobility of medium farmers

Transition metrics for Medium					
1999	2006				Total
	Lowest Quintile	2nd Quintile	3rd Quintile	4th Quintile	
Lowest Quintile	0.3298	0.2234	0.2447	0.2021	94
2nd Quintile	0.2323	0.2929	0.2222	0.2525	99
3rd Quintile	0.1575	0.2126	0.3071	0.3228	127
4th Quintile	0.0630	0.1339	0.2126	0.5906	127
Total	82	94	111	160	447
Consumption Mobility	0.8265				
Upward Mobility	0.49				
Immobility	0.51				
Downward Mobility	0.34				

Table B6.2.5: Consumption mobility of large farmers

Transition metrics for Large					
1999	2006				Total
	Lowest Quintile	2nd Quintile	3rd Quintile	4th Quintile	
Lowest Quintile	0.2586	0.1897	0.2069	0.3448	58
2nd Quintile	0.1339	0.1607	0.3304	0.3750	112
3rd Quintile	0.0802	0.1444	0.2781	0.4973	187
4th Quintile	0.0436	0.0909	0.1782	0.6873	275
Total	57	81	150	344	632
Consumption Mobility	0.8718				
Upward Mobility	0.65				
Immobility	0.46				
Downward Mobility	0.22				

Table B6.3.1: Assets mobility of landless

Transition metrics of landless					
1999	2006				
	Lowest Quintile	2nd Quintile	3rd Quintile	4rth Quintile	Total
Lowest Quintile	0.5340	0.3268	0.1271	0.0121	26
2nd Quintile	0.3268	0.4397	0.1518	0.0817	110
3rd Quintile	0.1111	0.4889	0.2444	0.1556	249
4rth Quintile	0.0909	0.1818	0.4545	0.2727	425
Total	79	111	187	433	810
Assets Mobility	0.84				
Upward Mobility	0.28				
Immobility	0.50				
Downward Mobility	0.55				

Table B6.3.2: Assets mobility of Marginal farmers

Transition metrics of Marginal Farmers					
1999	2006				
	Lowest Quintile	2nd Quintile	3rd Quintile	4rth Quintile	Total
Lowest Quintile	0.2660	0.5000	0.1702	0.0638	26
2nd Quintile	0.0600	0.5000	0.2900	0.1500	110
3rd Quintile	0.0000	0.1746	0.4762	0.3492	249
4rth Quintile	0.0417	0.0833	0.1875	0.6875	425
Total	79	111	187	433	810
Assets Mobility	0.69				
Upward Mobility	0.51				
Immobility	0.64				
Downward Mobility	0.18				

Table B6.3.3: Assets mobility of Small farmers

Transition metrics of Small Farmers					
1999	2006				
	Lowest Quintile	2nd Quintile	3rd Quintile	4rth Quintile	Total
Lowest Quintile	0.0652	0.4130	0.4565	0.0652	26
2nd Quintile	0.0000	0.3162	0.5368	0.1471	110
3rd Quintile	0.0000	0.1260	0.5354	0.3386	249
4rth Quintile	0.0698	0.0233	0.2093	0.6977	425
Total	79	111	187	433	810
Assets Mobility	0.80				
Upward Mobility	0.65				
Immobility	0.54				
Downward Mobility	0.14				

Table B6.3.4: Assets mobility of Medium farmers

Transition metrics of Medium Farmers					
1999	2006				
	Lowest Quintile	2nd Quintile	3rd Quintile	4rth Quintile	Total
Lowest Quintile	0.1538	0.3077	0.3846	0.1538	26
2nd Quintile	0.0097	0.1845	0.5146	0.2913	110
3rd Quintile	0.0000	0.0517	0.3736	0.5747	249
4rth Quintile	0.0068	0.0068	0.1701	0.8163	425
Total	79	111	187	433	810
Assets Mobility	0.82				
Upward Mobility	0.74				
Immobility	0.51				
Downward Mobility	0.08				

Table B6.3.5: Assets mobility of large farmers

Transition metrics of Large Farmers					
1999	2006				
	Lowest Quintile	2nd Quintile	3rd Quintile	4rth Quintile	Total
Lowest Quintile	0.0000	0.0000	0.5714	0.4286	26
2nd Quintile	0.0000	0.0313	0.2656	0.7031	110
3rd Quintile	0.0000	0.0331	0.2053	0.7616	249
4rth Quintile	0.0000	0.0000	0.0386	0.9614	425
Total	79	111	187	433	810
Assets Mobility	0.93				
Upward Mobility	0.91				
Immobility	0.40				
Downward Mobility	0.02				

Table B7.1.1: Income mobility of agro-climate zones (Humid)

Transition metrics for Agro-climate zone (Humid)						
1999	2006					Total
	Lowest Quintile	2nd Quintile	3rd Quintile	4rth Quintile	Highest Quintile	
Lowest Quintile	0.0865	0.1919	0.2757	0.2568	0.1892	370
2nd Quintile	0.0737	0.2105	0.2982	0.2211	0.1965	285
3rd Quintile	0.0862	0.1621	0.2207	0.2655	0.2655	290
4rth Quintile	0.0714	0.0940	0.1917	0.2744	0.3684	266
Highest Quintile	0.0744	0.0273	0.1017	0.2159	0.5806	403
Total	127	214	343	395	535	1,614
Income Mobility	0.9068					
Upward Mobility	0.6322					
Immobility	0.3432					
Downward Mobility	0.2746					

Table B7.1.2: Income mobility of agro-climate zones (Semi-arid temperate)

Transition metrics for Agro-climate zone (Semi-arid temperate)						
2006						
1999	Lowest Quintile	2nd Quintile	3rd Quintile	4rth Quintile	Highest Quintile	Total
Lowest Quintile	0.1173	0.1378	0.2194	0.2704	0.2551	196
2nd Quintile	0.1467	0.1429	0.2471	0.2162	0.2471	259
3rd Quintile	0.0887	0.1346	0.1865	0.2905	0.2997	327
4rth Quintile	0.0500	0.0750	0.1500	0.2813	0.4438	320
Highest Quintile	0.0123	0.0123	0.0658	0.1893	0.7202	243
Total	109	135	232	340	529	1,345
Income Mobility	0.8880					
Upward Mobility	0.6568					
Immobility	0.3620					
Downward Mobility	0.2312					

Table B7.1.3: Income mobility of agro-climate zones (Semi-arid tropic)

Transition metrics for Agro-climate zone (Semi-arid tropic)						
2006						
1999	Lowest Quintile	2nd Quintile	3rd Quintile	4rth Quintile	Highest Quintile	Total
Lowest Quintile	0.0865	0.1489	0.2414	0.2193	0.3038	497
2nd Quintile	0.0915	0.1630	0.2346	0.2803	0.2306	503
3rd Quintile	0.1030	0.0930	0.1583	0.2990	0.3467	398
4rth Quintile	0.0807	0.0929	0.1932	0.2200	0.4132	409
Highest Quintile	0.0688	0.0860	0.1404	0.1719	0.5330	349
Total	187	261	429	519	760	2,156
Income Mobility	0.9598					
Upward Mobility	0.6795					
Immobility	0.2902					
Downward Mobility	0.2803					

Table B7.1.4: Income mobility of agro-climate zones (Arid)

Transition metrics for Agro-climate zone (Arid)						
2006						
1999	Lowest Quintile	2nd Quintile	3rd Quintile	4rth Quintile	Highest Quintile	Total
Lowest Quintile	0.1333	0.1111	0.1333	0.2222	0.4000	45
2nd Quintile	0.0750	0.0750	0.2750	0.3750	0.2000	40
3rd Quintile	0.0351	0.1228	0.2281	0.2807	0.3333	57
4rth Quintile	0.0313	0.0833	0.1146	0.3750	0.3958	96
Highest Quintile	0.0190	0.0095	0.0667	0.1048	0.8000	105
Total	16	24	48	88	167	343
Income Mobility	0.8471					
Upward Mobility	0.6816					
Immobility	0.4029					
Downward Mobility	0.1655					

Table B7.2.1: Consumption mobility of Agro-climatic zones (Humid)

Transition metrics for Humid					
1999	2006				Total
	Lowest Quintile	2nd Quintile	3rd Quintile	4th Quintile	
Lowest Quintile	0.3587	0.2874	0.2352	0.1188	421
2nd Quintile	0.2083	0.2083	0.3780	0.2054	336
3rd Quintile	0.1315	0.2110	0.2932	0.3644	365
4th Quintile	0.0538	0.1118	0.1988	0.6356	483
Total	295	322	429	559	1,605
Consumption Mobility	0.8347				
Upward Mobility	0.53				
Immobility	0.50				
Downward Mobility	0.31				

Table B7.2.2: Consumption mobility of Agro-climatic zones (Semi-arid temperate)

Transition metrics for Semi-arid temperate					
1999	2006				Total
	Lowest Quintile	2nd Quintile	3rd Quintile	4th Quintile	
Lowest Quintile	0.2885	0.2459	0.2459	0.2197	305
2nd Quintile	0.1730	0.2170	0.2421	0.3679	318
3rd Quintile	0.1114	0.1657	0.2229	0.5000	350
4th Quintile	0.0622	0.0973	0.2189	0.6216	370
Total	205	238	311	589	1,343
Consumption Mobility	0.8833				
Upward Mobility	0.61				
Immobility	0.45				
Downward Mobility	0.28				

Table B7.2.3: Consumption mobility of Agro-climatic zones (Semi-arid tropic)

Transition metrics for Semi-arid tropical					
1999	2006				Total
	Lowest Quintile	2nd Quintile	3rd Quintile	4th Quintile	
Lowest Quintile	0.4136	0.2316	0.1838	0.1710	544
2nd Quintile	0.2622	0.2524	0.2801	0.2052	614
3rd Quintile	0.2003	0.2263	0.2746	0.2988	579
4th Quintile	0.1658	0.1332	0.2312	0.4698	398
Total	568	465	523	579	2,135
Consumption Mobility	0.8632				
Upward Mobility	0.46				
Immobility	0.47				
Downward Mobility	0.41				

Table B7.2.4: Consumption mobility of Agro-climatic zones (Arid)

Transition metrics for Arid					
1999	2006				Total
	Lowest Quintile	2nd Quintile	3rd Quintile	4th Quintile	
Lowest Quintile	0.4058	0.1739	0.2464	0.1739	69
2nd Quintile	0.4038	0.0577	0.2308	0.3077	52
3rd Quintile	0.1286	0.1000	0.2571	0.5143	70
4th Quintile	0.0258	0.0645	0.1742	0.7355	155
Total	62	32	74	178	346
Consumption Mobility	0.8480				
Upward Mobility	0.55				
Immobility	0.49				
Downward Mobility	0.30				

Table B7.3.1: Assets mobility of Agro-climatic zones (Humid)

Transition metrics of agro-climate zones (Humid)					
1999	2006				Total
	Lowest Quintile	2nd Quintile	3rd Quintile	4th Quintile	
Lowest Quintile	0.3422	0.3333	0.2362	0.0883	26
2nd Quintile	0.1217	0.3198	0.3628	0.1957	110
3rd Quintile	0.0546	0.1514	0.3772	0.4169	249
4th Quintile	0.0295	0.0826	0.2330	0.6549	425
Total	79	111	187	433	810
Assets Mobility	0.77				
Upward Mobility	0.54				
Immobility	0.56				
Downward Mobility	0.22				

Table B7.3.2: Assets mobility of Agro-climatic zones (Semi-arid temperate)

Transition metrics of agro-climate zones (Semi-arid temperate)					
1999	2006				Total
	Lowest Quintile	2nd Quintile	3rd Quintile	4th Quintile	
Lowest Quintile	0.3529	0.3897	0.1691	0.0882	26
2nd Quintile	0.1536	0.3542	0.3009	0.1912	110
3rd Quintile	0.0536	0.1935	0.3214	0.4315	249
4th Quintile	0.0287	0.0670	0.1316	0.7727	425
Total	79	111	187	433	810
Assets Mobility	0.73				
Upward Mobility	0.52				
Immobility	0.60				
Downward Mobility	0.21				

Table B7.3.3: Assets mobility of Agro-climatic zones (Semi-arid tropic)

Transition metrics of agro-climate zones (Semi-arid tropic)					
2006					
1999	Lowest Quintile	2nd Quintile	3rd Quintile	4rth Quintile	Total
Lowest Quintile	0.3172	0.3423	0.2097	0.1308	26
2nd Quintile	0.1279	0.2957	0.3173	0.2591	110
3rd Quintile	0.0718	0.2067	0.3450	0.3765	249
4rth Quintile	0.0258	0.1101	0.2272	0.6370	425
Total	79	111	187	433	810
Assets Mobility	0.80				
Upward Mobility	0.55				
Immobility	0.53				
Downward Mobility	0.26				

Table B7.3.4: Assets mobility of Agro-climatic zones (Arid)

Transition metrics of agro-climate zones (Arid)					
2006					
1999	Lowest Quintile	2nd Quintile	3rd Quintile	4rth Quintile	Total
Lowest Quintile	0.3654	0.4615	0.1346	0.0385	26
2nd Quintile	0.1364	0.3333	0.3030	0.2273	110
3rd Quintile	0.0725	0.2609	0.2754	0.3913	249
4rth Quintile	0.0252	0.0377	0.0943	0.8428	425
Total	79	111	187	433	810
Assets Mobility	0.73				
Upward Mobility	0.52				
Immobility	0.61				
Downward Mobility	0.21				

Table B8.1.1: Income mobility of regions (North)

Transition metrics for North						
2006						
1999	Lowest Quintile	2nd Quintile	3rd Quintile	4rth Quintile	Highest Quintile	Total
Lowest Quintile	0.1075	0.1559	0.2473	0.2151	0.2742	186
2nd Quintile	0.1365	0.1245	0.2651	0.2209	0.2530	249
3rd Quintile	0.0934	0.1384	0.1903	0.2734	0.3045	289
4rth Quintile	0.0494	0.0648	0.1574	0.2809	0.4475	324
Highest Quintile	0.0182	0.0152	0.0578	0.1520	0.7568	329
Total	103	126	237	315	596	1,377
Income Mobility	0.8850					
Upward Mobility	0.6642					
Immobility	0.3650					
Downward Mobility	0.2208					

Table B8.1.2: Income mobility of regions (East)

Transition metrics for East						
1999	2006					Total
	Lowest Quintile	2nd Quintile	3rd Quintile	4th Quintile	Highest Quintile	
Lowest Quintile	0.1099	0.2042	0.2932	0.2042	0.1885	382
2nd Quintile	0.0896	0.2045	0.2633	0.2493	0.1933	357
3rd Quintile	0.1178	0.1465	0.1911	0.2611	0.2834	314
4th Quintile	0.0647	0.0862	0.2672	0.2586	0.3233	232
Highest Quintile	0.0500	0.0625	0.2438	0.2250	0.4188	160
Total	134	227	367	345	372	1,445
Income Mobility	0.9543					
Upward Mobility	0.6159					
Immobility	0.2957					
Downward Mobility	0.3383					

Table B8.1.3: Income mobility of regions (South)

Transition metrics for South						
1999	2006					Total
	Lowest Quintile	2nd Quintile	3rd Quintile	4th Quintile	Highest Quintile	
Lowest Quintile	0.0921	0.1333	0.2603	0.2540	0.2603	315
2nd Quintile	0.0959	0.1747	0.3048	0.2500	0.1747	292
3rd Quintile	0.1111	0.1333	0.2000	0.2778	0.2778	270
4th Quintile	0.0890	0.1135	0.1626	0.2853	0.3497	326
Highest Quintile	0.0966	0.0558	0.1073	0.2124	0.5279	466
Total	161	192	328	420	568	1,669
Income Mobility	0.9300					
Upward Mobility	0.6357					
Immobility	0.3200					
Downward Mobility	0.2944					

Table B8.1.4: Income mobility of regions (West)

Transition metrics for West						
1999	2006					Total
	Lowest Quintile	2nd Quintile	3rd Quintile	4th Quintile	Highest Quintile	
Lowest Quintile	0.0655	0.1379	0.1793	0.2759	0.3414	290
2nd Quintile	0.0827	0.1367	0.2122	0.2770	0.2914	278
3rd Quintile	0.0559	0.0954	0.1711	0.3191	0.3586	304
4th Quintile	0.0473	0.0845	0.1554	0.2500	0.4628	296
Highest Quintile	0.0183	0.0457	0.1096	0.1826	0.6438	219
Total	77	142	233	368	567	1,387
Income Mobility	0.9332					
Upward Mobility	0.7139					
Immobility	0.3168					
Downward Mobility	0.2193					

Table B8.2.1: Consumption mobility of regions (North)

Transition metrics for North					
1999	2006				Total
	Lowest Quintile	2nd Quintile	3rd Quintile	4th Quintile	
Lowest Quintile	0.3365	0.2724	0.2179	0.1731	312
2nd Quintile	0.2120	0.2297	0.2226	0.3357	283
3rd Quintile	0.1280	0.1677	0.2256	0.4787	328
4th Quintile	0.0505	0.0923	0.1802	0.6769	455
Total	230	247	287	614	1,378
Consumption Mobility	0.8437				
Upward Mobility	0.57				
Immobility	0.49				
Downward Mobility	0.28				

Table B8.2.2: Consumption mobility of regions (East)

Transition metrics for East					
1999	2006				Total
	Lowest Quintile	2nd Quintile	3rd Quintile	4th Quintile	
Lowest Quintile	0.2903	0.3150	0.2283	0.1664	565
2nd Quintile	0.2291	0.3128	0.2905	0.1676	358
3rd Quintile	0.1832	0.2967	0.3260	0.1941	273
4th Quintile	0.1762	0.2090	0.2254	0.3893	244
Total	339	422	377	302	1,440
Consumption Mobility	0.8938				
Upward Mobility	0.45				
Immobility	0.44				
Downward Mobility	0.44				

Table B8.2.3: Consumption mobility of regions (South)

Transition metrics for South					
1999	2006				Total
	Lowest Quintile	2nd Quintile	3rd Quintile	4th Quintile	
Lowest Quintile	0.5164	0.1761	0.1821	0.1254	335
2nd Quintile	0.2794	0.1973	0.2971	0.2262	451
3rd Quintile	0.1514	0.1915	0.2918	0.3653	449
4th Quintile	0.0667	0.0905	0.2167	0.6262	420
Total	395	272	417	571	1,655
Consumption Mobility	0.7894				
Upward Mobility	0.46				
Immobility	0.54				
Downward Mobility	0.33				

Table B8.2.4: Consumption mobility of regions (West)

Transition metrics for West					
1999	2006				Total
	Lowest Quintile	2nd Quintile	3rd Quintile	4rth Quintile	
Lowest Quintile	0.3200	0.2080	0.2560	0.2160	250
2nd Quintile	0.2133	0.1884	0.3241	0.2742	361
3rd Quintile	0.1880	0.1855	0.2386	0.3880	415
4rth Quintile	0.1236	0.1034	0.2213	0.5517	348
Total	278	233	357	506	1,374
Consumption Mobility	0.9005				
Upward Mobility	0.56				
Immobility	0.43				
Downward Mobility	0.35				

Table B8.3.1: Assets mobility of regions (North)

Transition metrics of regions (North)					
1999	2006				Total
	Lowest Quintile	2nd Quintile	3rd Quintile	4rth Quintile	
Lowest Quintile	0.3626	0.3817	0.1641	0.0916	26
2nd Quintile	0.1504	0.3599	0.2861	0.2035	110
3rd Quintile	0.0493	0.1447	0.3257	0.4803	249
4rth Quintile	0.0253	0.0589	0.0905	0.8253	425
Total	79	111	187	433	810
Assets Mobility	0.71				
Upward Mobility	0.54				
Immobility	0.62				
Downward Mobility	0.17				

Table B8.3.2: Assets mobility of regions (East)

Transition metrics of regions (East)					
1999	2006				Total
	Lowest Quintile	2nd Quintile	3rd Quintile	4rth Quintile	
Lowest Quintile	0.3124	0.2908	0.2370	0.1598	26
2nd Quintile	0.1499	0.2795	0.3429	0.2277	110
3rd Quintile	0.1053	0.2072	0.3355	0.3520	249
4rth Quintile	0.1224	0.1603	0.2574	0.4599	425
Total	79	111	187	433	810
Assets Mobility	0.87				
Upward Mobility	0.54				
Immobility	0.46				
Downward Mobility	0.33				

Table B8.3.3: Assets mobility of regions (South)

Transition metrics of regions (South)					
2006					
1999	Lowest Quintile	2nd Quintile	3rd Quintile	4rth Quintile	Total
Lowest Quintile	0.3324	0.3537	0.1941	0.1197	26
2nd Quintile	0.1274	0.3514	0.3373	0.1840	110
3rd Quintile	0.0586	0.2256	0.3666	0.3492	249
4rth Quintile	0.0196	0.0954	0.2445	0.6406	425
Total	79	111	187	433	810
Assets Mobility	0.77				
Upward Mobility	0.51				
Immobility	0.56				
Downward Mobility	0.26				

Table B8.3.4: Assets mobility of regions (West)

Transition metrics of regions (West)					
2006					
1999	Lowest Quintile	2nd Quintile	3rd Quintile	4rth Quintile	Total
Lowest Quintile	0.3261	0.3551	0.2283	0.0906	26
2nd Quintile	0.1136	0.2659	0.3296	0.2909	110
3rd Quintile	0.0721	0.1716	0.3134	0.4428	249
4rth Quintile	0.0143	0.0630	0.2206	0.7020	425
Total	79	111	187	433	810
Assets Mobility	0.80				
Upward Mobility	0.58				
Immobility	0.54				
Downward Mobility	0.22				

Table B9.1.1: Income mobility of SC households

Income transition metrics for SC HH						
2006						
1999	Lowest Quintile	2nd Quintile	3rd Quintile	4rth Quintile	Highest Quintile	Total
Lowest Quintile	0.1321	0.2736	0.2830	0.2264	0.0849	45
2nd Quintile	0.1008	0.2403	0.3256	0.2248	0.1085	40
3rd Quintile	0.0696	0.1478	0.2000	0.3565	0.2261	57
4rth Quintile	0.0667	0.1333	0.3600	0.2533	0.1867	96
Highest Quintile	0.0000	0.0222	0.1778	0.2000	0.6000	105
Total	16	24	48	88	167	343
Income Mobility	0.8936					
Upward Mobility	0.5740					
Immobility	0.3564					
Downward Mobility	0.3195					

Table B9.1.2: Income mobility of ST households

Income transition metrics for ST HH						
2006						
1999	Lowest Quintile	2nd Quintile	3rd Quintile	4th Quintile	Highest Quintile	Total
Lowest Quintile	0.1639	0.3279	0.1803	0.2131	0.1148	45
2nd Quintile	0.1136	0.1818	0.3182	0.2500	0.1364	40
3rd Quintile	0.1250	0.3333	0.1667	0.2083	0.1667	57
4th Quintile	0.0588	0.0588	0.1176	0.2941	0.4706	96
Highest Quintile	0.0000	0.0000	0.0000	0.0000	1.0000	105
Total	16	24	48	88	167	343
Income Mobility	0.7984					
Upward Mobility	0.5965					
Immobility	0.4516					
Downward Mobility	0.2018					

Table B9.1.3: Income mobility of OBC households

Income transition metrics for OBC HH						
2006						
1999	Lowest Quintile	2nd Quintile	3rd Quintile	4th Quintile	Highest Quintile	Total
Lowest Quintile	0.0827	0.1360	0.2507	0.2800	0.2507	45
2nd Quintile	0.1078	0.1456	0.2803	0.2318	0.2345	40
3rd Quintile	0.1240	0.1348	0.1725	0.2722	0.2965	57
4th Quintile	0.0887	0.0645	0.1613	0.2581	0.4274	96
Highest Quintile	0.0710	0.0679	0.1235	0.2068	0.5309	105
Total	16	24	48	88	167	343
Income Mobility	0.9526					
Upward Mobility	0.6650					
Immobility	0.2974					
Downward Mobility	0.2876					

Table B9.1.4: Income mobility of OC households

Income transition metrics for OC HH						
2006						
1999	Lowest Quintile	2nd Quintile	3rd Quintile	4th Quintile	Highest Quintile	Total
Lowest Quintile	0.0702	0.0994	0.1930	0.2456	0.3918	45
2nd Quintile	0.0426	0.1135	0.2411	0.2553	0.3475	40
3rd Quintile	0.0644	0.0792	0.1832	0.2921	0.3812	57
4th Quintile	0.0247	0.0782	0.1358	0.2222	0.5391	96
Highest Quintile	0.0444	0.0167	0.0889	0.1389	0.7111	105
Total	16	24	48	88	167	343
Income Mobility	0.9250					
Upward Mobility	0.7465					
Immobility	0.3250					
Downward Mobility	0.1784					

Table B9.2.1: Consumption mobility of SC households

Transition metrics for SC HH					
2006					
1999	Lowest Quintile	2nd Quintile	3rd Quintile	4rth Quintile	Total
Lowest Quintile	0.4294	0.2412	0.1941	0.1353	26
2nd Quintile	0.2391	0.2536	0.3043	0.2029	110
3rd Quintile	0.1981	0.2075	0.3019	0.2925	249
4rth Quintile	0.0784	0.1373	0.2549	0.5294	425
Total	79	111	187	433	810
Consumption Mobility	0.8286				
Upward Mobility	0.46				
Immobility	0.50				
Downward Mobility	0.37				

Table B9.2.2: Consumption mobility of ST households

Transition metrics for ST HH					
2006					
1999	Lowest Quintile	2nd Quintile	3rd Quintile	4rth Quintile	Total
Lowest Quintile	0.6000	0.2000	0.1412	0.0588	26
2nd Quintile	0.4688	0.2500	0.2188	0.0625	110
3rd Quintile	0.4545	0.1818	0.0909	0.2727	249
4rth Quintile	0.4286	0.0000	0.1429	0.4286	425
Total	79	111	187	433	810
Consumption Mobility	0.8768				
Upward Mobility	0.32				
Immobility	0.46				
Downward Mobility	0.56				

Table B9.2.3: Consumption mobility of OBC households

Transition metrics for OBC HH					
2006					
1999	Lowest Quintile	2nd Quintile	3rd Quintile	4rth Quintile	Total
Lowest Quintile	0.3479	0.2604	0.2363	0.1554	26
2nd Quintile	0.2213	0.2362	0.3340	0.2085	110
3rd Quintile	0.1285	0.1937	0.2727	0.4051	249
4rth Quintile	0.1048	0.1344	0.2473	0.5134	425
Total	79	111	187	433	810
Consumption Mobility	0.8766				
Upward Mobility	0.53				
Immobility	0.46				
Downward Mobility	0.34				

Table B9.2.4: Consumption mobility of OC households

Transition metrics for OC HH					
2006					
1999	Lowest Quintile	2nd Quintile	3rd Quintile	4th Quintile	Total
Lowest Quintile	0.2381	0.2993	0.2313	0.2313	26
2nd Quintile	0.1610	0.2293	0.2683	0.3415	110
3rd Quintile	0.1138	0.2000	0.2483	0.4379	249
4th Quintile	0.0552	0.0892	0.2038	0.6518	425
Total	79	111	187	433	810
Consumption Mobility	0.8775				
Upward Mobility	0.60				
Immobility	0.46				
Downward Mobility	0.27				

Table B9.3.1: Assets mobility of SC households

Transition metrics of SC					
2006					
1999	Lowest Quintile	2nd Quintile	3rd Quintile	4th Quintile	Total
Lowest Quintile	0.4016	0.3648	0.1680	0.0656	26
2nd Quintile	0.1641	0.4609	0.2891	0.0859	110
3rd Quintile	0.1235	0.2840	0.3827	0.2099	249
4th Quintile	0.0000	0.1765	0.2353	0.5882	425
Total	79	111	187	433	810
Assets Mobility	0.72				
Upward Mobility	0.39				
Immobility	0.61				
Downward Mobility	0.33				

Table B9.3.2: Assets mobility of ST households

Transition metrics of ST					
2006					
1999	Lowest Quintile	2nd Quintile	3rd Quintile	4th Quintile	Total
Lowest Quintile	0.4545	0.3273	0.1273	0.0909	26
2nd Quintile	0.2182	0.3091	0.2909	0.1818	110
3rd Quintile	0.1667	0.2222	0.3333	0.2778	249
4th Quintile	0.3158	0.2105	0.1579	0.3158	425
Total	79	111	187	433	810
Assets Mobility	0.86				
Upward Mobility	0.43				
Immobility	0.47				
Downward Mobility	0.43				

Table B9.3.3: Assets mobility of OBC households

Transition metrics of OBC					
1999	2006				
	Lowest Quintile	2nd Quintile	3rd Quintile	4rth Quintile	Total
Lowest Quintile	0.3039	0.3470	0.2284	0.1207	26
2nd Quintile	0.1193	0.3251	0.3230	0.2325	110
3rd Quintile	0.0453	0.2328	0.3427	0.3793	249
4rth Quintile	0.0375	0.1025	0.2075	0.6525	425
Total	79	111	187	433	810
Assets Mobility	0.79				
Upward Mobility	0.54				
Immobility	0.54				
Downward Mobility	0.25				

Table B9.3.4: Assets mobility of OC households

Transition metrics of OC					
1999	2006				
	Lowest Quintile	2nd Quintile	3rd Quintile	4rth Quintile	Total
Lowest Quintile	0.2410	0.2892	0.3614	0.1084	26
2nd Quintile	0.0742	0.2183	0.3537	0.3537	110
3rd Quintile	0.0374	0.1092	0.3046	0.5489	249
4rth Quintile	0.0131	0.0523	0.1329	0.8017	425
Total	79	111	187	433	810
Income Mobility	0.81				
Upward Mobility	0.67				
Immobility	0.52				
Downward Mobility	0.14				

Table B10.1.1: Income mobility of male headed households

Income transition metrics for male headed HH						
1999	2006					
	Lowest Quintile	2nd Quintile	3rd Quintile	4rth Quintile	Highest Quintile	Total
Lowest Quintile	0.0977	0.1663	0.2495	0.2360	0.2505	45
2nd Quintile	0.0987	0.1717	0.2600	0.2457	0.2239	40
3rd Quintile	0.0965	0.1313	0.1931	0.2741	0.3050	57
4rth Quintile	0.0619	0.0855	0.1866	0.2593	0.4067	96
Highest Quintile	0.0538	0.0416	0.1065	0.1907	0.6075	105
Total	16	24	48	88	167	343
Income Mobility	0.9177					
Upward Mobility	0.6544					
Immobility	0.3323					
Downward Mobility	0.2632					

Table B10.1.2: Income mobility of female headed households

Income transition metrics for female headed HH						
1999	2006					
	Lowest Quintile	2nd Quintile	3rd Quintile	4th Quintile	Highest Quintile	Total
Lowest Quintile	0.0909	0.0909	0.2121	0.3030	0.3030	45
2nd Quintile	0.0000	0.0800	0.3200	0.3200	0.2800	40
3rd Quintile	0.0500	0.0000	0.2000	0.3500	0.4000	57
4th Quintile	0.0588	0.1471	0.1765	0.2647	0.3529	96
Highest Quintile	0.0566	0.0566	0.1132	0.2075	0.5660	105
Total	16	24	48	88	167	343
Income Mobility	0.9496					
Upward Mobility	0.7330					
Immobility	0.3004					
Downward Mobility	0.2166					

Table B10.1.3: Income mobility of prop. of female in a households (1st quartile)

Income transition metrics for proportion of female HH (1st quartile)						
1999	2006					
	Lowest Quintile	2nd Quintile	3rd Quintile	4th Quintile	Highest Quintile	Total
Lowest Quintile	0.0909	0.1623	0.2662	0.2468	0.2338	45
2nd Quintile	0.1029	0.1618	0.2868	0.1985	0.2500	40
3rd Quintile	0.0789	0.1579	0.1974	0.3158	0.2500	57
4th Quintile	0.0370	0.0617	0.1975	0.2407	0.4630	96
Highest Quintile	0.0549	0.0366	0.1280	0.1768	0.6037	105
Total	16	24	48	88	167	343
Income Mobility	0.9264					
Upward Mobility	0.6683					
Immobility	0.3236					
Downward Mobility	0.2581					

Table B10.1.4: Income mobility of prop. of female in a households (2nd quartile)

Income transition metrics for proportion of female HH (2nd quartile)						
1999	2006					
	Lowest Quintile	2nd Quintile	3rd Quintile	4th Quintile	Highest Quintile	Total
Lowest Quintile	0.0881	0.1347	0.1813	0.2746	0.3212	45
2nd Quintile	0.0863	0.1320	0.2741	0.2487	0.2589	40
3rd Quintile	0.1045	0.0896	0.2189	0.2736	0.3134	57
4th Quintile	0.0704	0.0657	0.1831	0.2629	0.4178	96
Highest Quintile	0.0717	0.0404	0.1076	0.2108	0.5695	105
Total	16	24	48	88	167	343
Income Mobility	0.9322					
Upward Mobility	0.6746					
Immobility	0.3178					
Downward Mobility	0.2575					

Table B10.1.5: Income mobility of prop. of female in a households (3rd quartile)

Income transition metrics for proportion of female HH (3rd quartile)						
2006						
1999	Lowest Quintile	2nd Quintile	3rd Quintile	4th Quintile	Highest Quintile	Total
Lowest Quintile	0.1250	0.3125	0.2500	0.1875	0.1250	45
2nd Quintile	0.1000	0.3000	0.4000	0.2000	0.0000	40
3rd Quintile	0.0000	0.1667	0.2500	0.3333	0.2500	57
4th Quintile	0.0000	0.1250	0.1250	0.5000	0.2500	96
Highest Quintile	0.2222	0.0000	0.0000	0.1111	0.6667	105
Total	16	24	48	88	167	343
Income Mobility	0.7896					
Upward Mobility	0.5771					
Immobility	0.4604					
Downward Mobility	0.2125					

Table B10.1.6: Income mobility of prop. of female in a households (highest quartile)

Income transition metrics for proportion of female HH (4th quartile)						
2006						
1999	Lowest Quintile	2nd Quintile	3rd Quintile	4th Quintile	Highest Quintile	Total
Lowest Quintile	0.1414	0.1515	0.2323	0.1616	0.3131	45
2nd Quintile	0.1204	0.1759	0.2870	0.2685	0.1481	40
3rd Quintile	0.1209	0.1978	0.1648	0.2418	0.2747	57
4th Quintile	0.0787	0.1011	0.1685	0.2809	0.3708	96
Highest Quintile	0.0526	0.0632	0.0842	0.2211	0.5789	105
Total	16	24	48	88	167	343
Income Mobility	0.9145					
Upward Mobility	0.6124					
Immobility	0.3355					
Downward Mobility	0.3021					

Table B10.2.1: Consumption mobility of male headed households

Transition metrics for male headed HH					
2006					
1999	Lowest Quintile	2nd Quintile	3rd Quintile	4th Quintile	Total
Lowest Quintile	0.3660	0.2557	0.2190	0.1593	26
2nd Quintile	0.2447	0.2297	0.2904	0.2352	110
3rd Quintile	0.1693	0.2071	0.2661	0.3575	249
4th Quintile	0.0948	0.1155	0.2127	0.5769	425
Total	79	111	187	433	810
Consumption Mobility	0.8538				
Upward Mobility	0.51				
Immobility	0.48				
Downward Mobility	0.35				

Table B10.2.2: Consumption mobility of female headed households

Transition metrics for female HH					
2006					
1999	Lowest Quintile	2nd Quintile	3rd Quintile	4rth Quintile	Total
Lowest Quintile	0.2813	0.1875	0.3125	0.2188	26
2nd Quintile	0.2222	0.2778	0.1667	0.3333	110
3rd Quintile	0.2571	0.1143	0.2286	0.4000	249
4rth Quintile	0.0328	0.0984	0.2295	0.6393	425
Total	79	111	187	433	810
Consumption Mobility	0.8577				
Upward Mobility	0.54				
Immobility	0.48				
Downward Mobility	0.32				

Table B10.2.3: Consumption mobility of prop. female members in a household (1st quartile)

Transition metrics for proportion of female HH (1st quartile)					
2006					
1999	Lowest Quintile	2nd Quintile	3rd Quintile	4rth Quintile	Total
Lowest Quintile	0.3595	0.2810	0.2549	0.1046	26
2nd Quintile	0.2404	0.2295	0.3115	0.2186	110
3rd Quintile	0.1712	0.1486	0.3378	0.3423	249
4rth Quintile	0.0878	0.1268	0.2683	0.5171	425
Total	79	111	187	433	810
Consumption Mobility	0.8520				
Upward Mobility	0.50				
Immobility	0.48				
Downward Mobility	0.35				

Table B10.2.4: Consumption mobility of prop. female members in a household (2nd quartile)

Transition metrics for proportion of female HH (2nd quartile)					
2006					
1999	Lowest Quintile	2nd Quintile	3rd Quintile	4rth Quintile	Total
Lowest Quintile	0.3220	0.1949	0.2754	0.2076	26
2nd Quintile	0.2323	0.2165	0.2520	0.2992	110
3rd Quintile	0.1815	0.1815	0.2661	0.3710	249
4rth Quintile	0.1000	0.1107	0.2107	0.5786	425
Total	79	111	187	433	810
Consumption Mobility	0.8722				
Upward Mobility	0.53				
Immobility	0.46				
Downward Mobility	0.34				

Table B10.2.5: Consumption mobility of prop. female members in a household (3rd quartile)

Transition metrics for proportion of female HH (3rd quartile)					
2006					
1999	Lowest Quintile	2nd Quintile	3rd Quintile	4rth Quintile	Total
Lowest Quintile	0.4000	0.3600	0.1600	0.0800	26
2nd Quintile	0.2353	0.1765	0.3529	0.2353	110
3rd Quintile	0.0909	0.4545	0.0909	0.3636	249
4rth Quintile	0.1000	0.1000	0.1000	0.7000	425
Total	79	111	187	433	810
Consumption Mobility	0.8775				
Upward Mobility	0.52				
Immobility	0.46				
Downward Mobility	0.36				

Table B10.2.6: Consumption mobility of prop. female members in a household (4rd quartile)

Transition metrics for proportion of female HH (4rth quartile)					
2006					
1999	Lowest Quintile	2nd Quintile	3rd Quintile	4rth Quintile	Total
Lowest Quintile	0.3333	0.3171	0.2195	0.1301	26
2nd Quintile	0.2574	0.1912	0.3162	0.2353	110
3rd Quintile	0.1359	0.2039	0.2718	0.3883	249
4rth Quintile	0.1008	0.0924	0.1092	0.6975	425
Total	79	111	187	433	810
Consumption Mobility	0.8354				
Upward Mobility	0.54				
Immobility	0.50				
Downward Mobility	0.30				

Table B10.3.1: Assets mobility of male headed households

Transition metrics of Male					
2006					
1999	Lowest Quintile	2nd Quintile	3rd Quintile	4rth Quintile	Total
Lowest Quintile	0.3356	0.3326	0.2082	0.1236	26
2nd Quintile	0.1311	0.3239	0.3183	0.2267	110
3rd Quintile	0.0737	0.1862	0.3390	0.4011	249
4rth Quintile	0.0347	0.0821	0.1823	0.7009	425
Total	79	111	187	433	810
Assets Mobility	0.77				
Upward Mobility	0.54				
Immobility	0.57				
Downward Mobility	0.23				

Table B10.3.2: Assets mobility of female headed households

Transition metrics of Female					
1999	2006				Total
	Lowest Quintile	2nd Quintile	3rd Quintile	4rth Quintile	
Lowest Quintile	0.2727	0.3030	0.2727	0.1515	26
2nd Quintile	0.0682	0.2273	0.5455	0.1591	110
3rd Quintile	0.0417	0.3333	0.3333	0.2917	249
4rth Quintile	0.0156	0.1094	0.3125	0.5625	425
Total	79	111	187	433	810
Assets Mobility	0.87				
Upward Mobility	0.57				
Immobility	0.47				
Downward Mobility	0.29				

Table B10.3.3: Assets mobility of prop. female members in a household (1st quartile)

Transition metrics for prop. Of female HH (lowest quartile)					
1999	2006				Total
	Lowest Quintile	2nd Quintile	3rd Quintile	4rth Quintile	
Lowest Quintile	0.3636	0.3523	0.2159	0.0682	26
2nd Quintile	0.1058	0.3492	0.3016	0.2434	110
3rd Quintile	0.0548	0.2100	0.2922	0.4429	249
4rth Quintile	0.0217	0.0815	0.1522	0.7446	425
Total	79	111	187	433	810
Assets Mobility	0.75				
Upward Mobility	0.54				
Immobility	0.58				
Downward Mobility	0.21				

Table B10.3.4: Assets mobility of prop. female members in a household (2nd quartile)

Transition metrics for prop. Of female HH (2nd quartile)					
1999	2006				Total
	Lowest Quintile	2nd Quintile	3rd Quintile	4rth Quintile	
Lowest Quintile	0.2863	0.2949	0.2051	0.2137	26
2nd Quintile	0.1270	0.3095	0.3056	0.2579	110
3rd Quintile	0.0687	0.1603	0.3282	0.4427	249
4rth Quintile	0.0323	0.1219	0.1685	0.6774	425
Total	79	111	187	433	810
Assets Mobility	0.80				
Upward Mobility	0.57				
Immobility	0.53				
Downward Mobility	0.23				

Table B10.3.5: Assets mobility of prop. female members in a household (3rd quartile)

Transition metrics for prop. Of female HH (3rd quartile)					
2006					
1999	Lowest Quintile	2nd Quintile	3rd Quintile	4th Quintile	Total
Lowest Quintile	0.5385	0.3846	0.0769	0.0000	26
2nd Quintile	0.1429	0.2857	0.4286	0.1429	110
3rd Quintile	0.0588	0.0588	0.4118	0.4706	249
4th Quintile	0.0000	0.1667	0.3333	0.5000	425
Total	79	111	187	433	810
Assets Mobility	0.75				
Upward Mobility	0.50				
Immobility	0.58				
Downward Mobility	0.25				

Table B10.3.6: Assets mobility of prop. female members in a household (4th quartile)

Transition metrics for prop. Of female HH (Highest quartile)					
2006					
1999	Lowest Quintile	2nd Quintile	3rd Quintile	4th Quintile	Total
Lowest Quintile	0.3000	0.3833	0.2250	0.0917	26
2nd Quintile	0.1544	0.2941	0.3824	0.1691	110
3rd Quintile	0.0645	0.1129	0.3871	0.4355	249
4th Quintile	0.0392	0.0392	0.2157	0.7059	425
Total	79	111	187	433	810
Assets Mobility	0.77				
Upward Mobility	0.56				
Immobility	0.56				
Downward Mobility	0.21				

Table B11.1.1: Income mobility of lowest profit class

Transition metrics for lowest profit class						
2006						
1999	Lowest Quintile	2nd Quintile	3rd Quintile	4th Quintile	Highest Quintile	Total
Lowest Quintile	0.1446	0.1928	0.3072	0.2229	0.1325	166
2nd Quintile	0.1582	0.2347	0.3010	0.2143	0.0918	196
3rd Quintile	0.1280	0.1611	0.2370	0.2749	0.1991	211
4th Quintile	0.0588	0.1176	0.1872	0.2727	0.3636	187
Highest Quintile	0.1121	0.0862	0.1293	0.1983	0.4741	116
Total	106	144	210	211	205	876
Income Mobility	0.9092					
Upward Mobility	0.5750					
Immobility	0.3408					
Downward Mobility	0.3342					

Table B11.1.2: Income mobility of 2nd profit class

Transition metrics for 2nd profit class						
1999	2006					Total
	Lowest Quintile	2nd Quintile	3rd Quintile	4rth Quintile	Highest Quintile	
Lowest Quintile	0.2941	0.2941	0.1618	0.2059	0.0441	68
2nd Quintile	0.2113	0.1549	0.3944	0.1268	0.1127	71
3rd Quintile	0.0882	0.1765	0.2941	0.2353	0.2059	34
4rth Quintile	0.1111	0.1111	0.2222	0.4444	0.1111	9
Highest Quintile	0.0667	0.0000	0.0667	0.2667	0.6000	15
Total	40	38	52	39	28	197
Income Mobility	0.8031					
Upward Mobility	0.4730					
Immobility	0.4469					
Downward Mobility	0.3301					

Table B11.1.3: Income mobility of 3rd profit class

Transition metrics for 3rd profit class						
1999	2006					Total
	Lowest Quintile	2nd Quintile	3rd Quintile	4rth Quintile	Highest Quintile	
Lowest Quintile	0.0758	0.2576	0.3788	0.1970	0.0909	66
2nd Quintile	0.1150	0.2743	0.3186	0.2478	0.0442	113
3rd Quintile	0.1190	0.2619	0.2143	0.2976	0.1071	84
4rth Quintile	0.0833	0.2667	0.2333	0.2333	0.1833	60
Highest Quintile	0.0000	0.1364	0.2727	0.1364	0.4545	22
Total	33	89	99	83	41	345
Income Mobility	0.9369					
Upward Mobility	0.5307					
Immobility	0.3131					
Downward Mobility	0.4062					

Table B11.1.4: Income mobility of highest profit class

Transition metrics for highest profit class						
1999	2006					Total
	Lowest Quintile	2nd Quintile	3rd Quintile	4rth Quintile	Highest Quintile	
Lowest Quintile	0.0000	0.0000	0.1250	0.2917	0.5833	24
2nd Quintile	0.0000	0.0000	0.0909	0.0909	0.8182	11
3rd Quintile	0.0074	0.0148	0.0963	0.3185	0.5630	135
4rth Quintile	0.0000	0.0000	0.1197	0.2394	0.6409	259
Highest Quintile	0.0000	0.0000	0.0525	0.1706	0.7769	381
Total	1	2	68	178	561	810
Income Mobility	0.9719					
Upward Mobility	0.8806					
Immobility	0.2781					
Downward Mobility	0.0913					

Table B11.2.1: Consumption mobility of lowest quartile profit class

Transition metrics for Lowest quartiles					
1999	2006				
	Lowest Quintile	2nd Quintile	3rd Quintile	4th Quintile	Total
Lowest Quintile	0.5107	0.2000	0.1607	0.1286	280
2nd Quintile	0.3122	0.1857	0.2700	0.2321	237
3rd Quintile	0.2000	0.1842	0.2474	0.3684	190
4th Quintile	0.1183	0.1124	0.2544	0.5148	169
Total	275	154	199	248	876
Consumption Mobility	0.8472				
Upward Mobility	0.45				
Immobility	0.49				
Downward Mobility	0.39				

Table B11.2.2: Consumption mobility of 2nd quartile profit class

Transition metrics for 2nd quartiles					
1999	2006				
	Lowest Quintile	2nd Quintile	3rd Quintile	4th Quintile	Total
Lowest Quintile	0.4211	0.3596	0.2018	0.0175	114
2nd Quintile	0.3125	0.2083	0.2917	0.1875	48
3rd Quintile	0.2353	0.3529	0.2353	0.1765	17
4th Quintile	0.0000	0.0556	0.1667	0.7778	18
Total	67	58	44	28	197
Consumption Mobility	0.7858				
Upward Mobility	0.41				
Immobility	0.55				
Downward Mobility	0.37				

Table B11.2.3: Consumption mobility of 3rd quartile profit class

Transition metrics for 3rd quartiles					
1999	2006				
	Lowest Quintile	2nd Quintile	3rd Quintile	4th Quintile	Total
Lowest Quintile	0.3696	0.2609	0.2500	0.1196	92
2nd Quintile	0.3306	0.2581	0.2581	0.1532	124
3rd Quintile	0.2421	0.2421	0.2632	0.2526	95
4th Quintile	0.2353	0.2059	0.1765	0.3824	34
Total	106	86	86	67	345
Consumption Mobility	0.9090				
Upward Mobility	0.43				
Immobility	0.42				
Downward Mobility	0.48				

Table B11.2.4: Consumption mobility of highest quartile profit class

Transition metrics for Highest quartiles					
	2006				
1999	Lowest Quintile	2nd Quintile	3rd Quintile	4th Quintile	Total
Lowest Quintile	0.1538	0.3077	0.1154	0.4231	26
2nd Quintile	0.1000	0.2091	0.2909	0.4000	110
3rd Quintile	0.1165	0.1888	0.2651	0.4297	249
4th Quintile	0.0824	0.0776	0.2024	0.6376	425
Total	79	111	187	433	810
Consumption Mobility	0.9115				
Upward Mobility	0.66				
Immobility	0.42				
Downward Mobility	0.26				

Table B11.3.1: Assets mobility of 1st quartile profit class

Transition metrics of profit classes (lowest quartile)					
	2006				
1999	Lowest Quintile	2nd Quintile	3rd Quintile	4th Quintile	Total
Lowest Quintile	0.4796	0.3184	0.1490	0.0531	26
2nd Quintile	0.2831	0.3562	0.2009	0.1598	110
3rd Quintile	0.1731	0.4038	0.2404	0.1827	249
4th Quintile	0.0794	0.1587	0.2381	0.5238	425
Total	79	111	187	433	810
Assets Mobility	0.80				
Upward Mobility	0.35				
Immobility	0.53				
Downward Mobility	0.45				

Table B11.3.2: Assets mobility of 2nd quartile profit class

Transition metrics of profit classes (2nd quartile)					
	2006				
1999	Lowest Quintile	2nd Quintile	3rd Quintile	4th Quintile	Total
Lowest Quintile	0.3298	0.5319	0.1277	0.0106	26
2nd Quintile	0.1724	0.4828	0.2759	0.0690	110
3rd Quintile	0.1250	0.3125	0.3438	0.2188	249
4th Quintile	0.3077	0.3077	0.2308	0.1538	425
Total	79	111	187	433	810
Assets Mobility	0.90				
Upward Mobility	0.41				
Immobility	0.44				
Downward Mobility	0.49				

Table B11.3.3: Assets mobility of 3rd quartile profit class

Transition metrics of profit classes (3rd quartile)					
2006					
1999	Lowest Quintile	2nd Quintile	3rd Quintile	4th Quintile	Total
Lowest Quintile	0.1875	0.5313	0.1875	0.0938	26
2nd Quintile	0.0743	0.4797	0.3716	0.0743	110
3rd Quintile	0.0317	0.2460	0.5397	0.1825	249
4th Quintile	0.0000	0.2051	0.4615	0.3333	425
Total	79	111	187	433	810
Assets Mobility	0.82				
Upward Mobility	0.48				
Immobility	0.51				
Downward Mobility	0.34				

Table B11.3.4: Assets mobility of 4th quartile profit class

Transition metrics of profit classes (Highest quartile)					
2006					
1999	Lowest Quintile	2nd Quintile	3rd Quintile	4th Quintile	Total
Lowest Quintile	0.0000	0.5000	0.5000	0.0000	26
2nd Quintile	0.0000	0.0638	0.4894	0.4468	110
3rd Quintile	0.0000	0.0448	0.3274	0.6278	249
4th Quintile	0.0000	0.0093	0.1175	0.8731	425
Total	79	111	187	433	810
Assets Mobility	0.91				
Upward Mobility	0.85				
Immobility	0.42				
Downward Mobility	0.06				

Table B12.1.1: Income mobility of lowest consumption class

Transition metrics for Lowest consumption class						
2006						
1999	Lowest Quintile	2nd Quintile	3rd Quintile	4th Quintile	Highest Quintile	Total
Lowest Quintile	0.1860	0.2479	0.3306	0.1570	0.0785	242
2nd Quintile	0.2222	0.2576	0.2879	0.1717	0.0606	198
3rd Quintile	0.2615	0.2462	0.2462	0.2308	0.0154	65
4th Quintile	0.1667	0.2917	0.2917	0.2083	0.0417	24
Highest Quintile	0.5000	0.5000	0.0000	0.0000	0.0000	2
Total	111	135	160	92	33	531
Income Mobility	1.0255					
Upward Mobility	0.41					
Immobility	0.22					
Downward Mobility	0.62					

Table B12.1.2: Income mobility of 2nd consumption class

Transition metrics for 2nd consumption class						
1999	2006					Total
	Lowest Quintile	2nd Quintile	3rd Quintile	4th Quintile	Highest Quintile	
Lowest Quintile	0.0746	0.1343	0.2985	0.3284	0.1642	67
2nd Quintile	0.0990	0.1188	0.3069	0.3267	0.1485	101
3rd Quintile	0.1277	0.1915	0.2660	0.3085	0.1064	94
4th Quintile	0.0526	0.0877	0.2281	0.4211	0.2105	57
Highest Quintile	0.0667	0.0000	0.2000	0.3333	0.4000	15
Total	31	44	92	113	54	334
Income Mobility	0.9299					
Upward Mobility	0.5832					
Immobility	0.3201					
Downward Mobility	0.3466					

Table B12.1.3: Income mobility of 3rd consumption class

Transition metrics for 3rd consumption class						
1999	2006					Total
	Lowest Quintile	2nd Quintile	3rd Quintile	4th Quintile	Highest Quintile	
Lowest Quintile	0.0213	0.0638	0.1915	0.2340	0.4894	47
2nd Quintile	0.0000	0.1053	0.2895	0.2632	0.3421	38
3rd Quintile	0.0435	0.0609	0.1739	0.3391	0.3826	115
4th Quintile	0.0446	0.0357	0.2054	0.2768	0.4375	112
Highest Quintile	0.0864	0.0247	0.1852	0.2593	0.4444	81
Total	18	20	78	112	165	393
Income Mobility	0.9946					
Upward Mobility	0.7582					
Immobility	0.2554					
Downward Mobility	0.2364					

Table B12.1.4: Income mobility of highest consumption class

Transition metrics for highest consumption class						
1999	2006					Total
	Lowest Quintile	2nd Quintile	3rd Quintile	4th Quintile	Highest Quintile	
Lowest Quintile	0.0635	0.0317	0.0635	0.1905	0.6508	63
2nd Quintile	0.0435	0.0000	0.1304	0.2174	0.6087	23
3rd Quintile	0.0645	0.0323	0.0161	0.2258	0.6613	62
4th Quintile	0.0359	0.0308	0.0769	0.2359	0.6205	195
Highest Quintile	0.0370	0.0078	0.0331	0.1150	0.8070	513
Total	35	14	40	136	631	856
Income Mobility	0.9694					
Upward Mobility	0.8502					
Immobility	0.2806					
Downward Mobility	0.1192					

Table B12.2.1: Assets mobility of 1st consumption class

Transition metrics of consumption classes (lowest quartile)					
2006					
1999	Lowest Quintile	2nd Quintile	3rd Quintile	4rth Quintile	Total
Lowest Quintile	0.5685	0.3032	0.0962	0.0321	26
2nd Quintile	0.2778	0.3810	0.2540	0.0873	110
3rd Quintile	0.1481	0.4444	0.2222	0.1852	249
4rth Quintile	0.8750	0.1250	0.0000	0.0000	425
Total	79	111	187	433	810
Assets Mobility	0.94				
Upward Mobility	0.32				
Immobility	0.39				
Downward Mobility	0.62				

Table B12.2.2: Assets mobility of 2nd consumption class

Transition metrics of consumption classes (2nd quartile)					
2006					
1999	Lowest Quintile	2nd Quintile	3rd Quintile	4rth Quintile	Total
Lowest Quintile	0.2828	0.4040	0.2323	0.0808	26
2nd Quintile	0.1327	0.3186	0.4071	0.1416	110
3rd Quintile	0.0353	0.2824	0.3529	0.3294	249
4rth Quintile	0.0811	0.2432	0.2162	0.4595	425
Total	79	111	187	433	810
Assets Mobility	0.86				
Upward Mobility	0.53				
Immobility	0.47				
Downward Mobility	0.33				

Table B12.2.3: Assets mobility of 3rd consumption class

Transition metrics of consumption classes (3rd quartile)					
2006					
1999	Lowest Quintile	2nd Quintile	3rd Quintile	4rth Quintile	Total
Lowest Quintile	0.0943	0.5472	0.2453	0.1132	26
2nd Quintile	0.0792	0.3663	0.3366	0.2178	110
3rd Quintile	0.0373	0.2090	0.3731	0.3806	249
4rth Quintile	0.0190	0.1143	0.2857	0.5810	425
Total	79	111	187	433	810
Assets Mobility	0.86				
Upward Mobility	0.61				
Immobility	0.47				
Downward Mobility	0.25				

Table B12.2.4: Assets mobility of 4rth consumption class

Transition metrics of consumption classes (Highest quartile)					
2006					
1999	Lowest Quintile	2nd Quintile	3rd Quintile	4rth Quintile	Total
Lowest Quintile	0.0000	0.2500	0.3500	0.4000	26
2nd Quintile	0.0250	0.2500	0.3500	0.3750	110
3rd Quintile	0.0048	0.0957	0.2967	0.6029	249
4rth Quintile	0.0036	0.0219	0.1129	0.8616	425
Total	79	111	187	433	810
Assets Mobility	0.86				
Upward Mobility	0.78				
Immobility	0.47				
Downward Mobility	0.09				

Table B13.1.1: Consumption mobility of lowest quintile income class

Transition metrics for Lowest income class					
2006					
1999	Lowest Quintile	2nd Quintile	3rd Quintile	4rth Quintile	Total
Lowest Quintile	0.5946	0.1757	0.1622	0.0676	74
2nd Quintile	0.3000	0.2500	0.3000	0.1500	20
3rd Quintile	0.4000	0.4000	0.1000	0.1000	10
4rth Quintile	0.0000	0.0000	0.2000	0.8000	5
Total	54	22	20	13	109
Consumption Mobility	0.7518				
Upward Mobility	0.32				
Immobility	0.58				
Downward Mobility	0.43				

Table B13.1.2: Consumption mobility of 2nd quintile income class

Transition metrics for 2nd quintiles					
2006					
1999	Lowest Quintile	2nd Quintile	3rd Quintile	4rth Quintile	Total
Lowest Quintile	0.5313	0.2604	0.1979	0.0104	96
2nd Quintile	0.5493	0.1690	0.2113	0.0704	71
3rd Quintile	0.3333	0.3333	0.2222	0.1111	18
4rth Quintile	0.4000	0.4000	0.2000	0.0000	5
Total	98	45	39	8	190
Consumption Mobility	1.0258				
Upward Mobility	0.29				
Immobility	0.31				
Downward Mobility	0.74				

Table B13.1.3: Consumption mobility of 3rd quintile income class

Transition metrics for 3rd quintiles					
2006					
1999	Lowest Quintile	2nd Quintile	3rd Quintile	4th Quintile	Total
Lowest Quintile	0.3478	0.2826	0.3261	0.0435	46
2nd Quintile	0.3333	0.2688	0.3226	0.0753	93
3rd Quintile	0.2899	0.2319	0.2899	0.1884	69
4th Quintile	0.2727	0.1818	0.4545	0.0909	11
Total	70	56	70	23	219
Consumption Mobility	1.0009				
Upward Mobility	0.41				
Immobility	0.33				
Downward Mobility	0.59				

Table B13.1.4: Consumption mobility of 4th quintile income class

Transition metrics for 4th quintiles					
2006					
1999	Lowest Quintile	2nd Quintile	3rd Quintile	4th Quintile	Total
Lowest Quintile	0.2174	0.4348	0.2609	0.0870	23
2nd Quintile	0.0857	0.3429	0.2857	0.2857	70
3rd Quintile	0.1923	0.1923	0.2385	0.3769	130
4th Quintile	0.1064	0.1809	0.2234	0.4894	94
Total	46	76	78	117	317
Consumption Mobility	0.9040				
Upward Mobility	0.58				
Immobility	0.43				
Downward Mobility	0.33				

Table B13.2.1: Consumption mobility of highest quintile income class

Transition metrics for Highest quintiles					
2006					
1999	Lowest Quintile	2nd Quintile	3rd Quintile	4th Quintile	Total
Lowest Quintile	0.0000	0.0000	0.0000	1.0000	8
2nd Quintile	0.0263	0.1579	0.2632	0.5526	38
3rd Quintile	0.0408	0.1224	0.2449	0.5918	147
4th Quintile	0.0178	0.0277	0.1364	0.8182	506
Total	16	38	115	530	699
Consumption Mobility	0.9263				
Upward Mobility	0.80				
Immobility	0.41				
Downward Mobility	0.12				

Table B13.2.2: Assets mobility of 1st quintile income class

Transition metrics of income classes (lowest quintile)					
2006					
1999	Lowest Quintile	2nd Quintile	3rd Quintile	4rth Quintile	Total
Lowest Quintile	0.4889	0.3778	0.1111	0.0222	26
2nd Quintile	0.2188	0.4063	0.2500	0.1250	110
3rd Quintile	0.0417	0.4583	0.3750	0.1250	249
4rth Quintile	0.5556	0.0000	0.3333	0.1111	425
Total	79	111	187	433	810
Assets Mobility	0.87				
Upward Mobility	0.34				
Immobility	0.46				
Downward Mobility	0.54				

Table B13.2.3: Assets mobility of 2nd quintile income class

Transition metrics of income classes (2nd quintile)					
2006					
1999	Lowest Quintile	2nd Quintile	3rd Quintile	4rth Quintile	Total
Lowest Quintile	0.5398	0.2743	0.1416	0.0442	26
2nd Quintile	0.1373	0.5098	0.3137	0.0392	110
3rd Quintile	0.1250	0.3333	0.5000	0.0417	249
4rth Quintile	0.4000	0.0000	0.4000	0.2000	425
Total	79	111	187	433	810
Assets Mobility	0.75				
Upward Mobility	0.28				
Immobility	0.58				
Downward Mobility	0.47				

Table B13.2.3: Assets mobility of 3rd quintile income class

Transition metrics of income classes (3rd quintile)					
2006					
1999	Lowest Quintile	2nd Quintile	3rd Quintile	4rth Quintile	Total
Lowest Quintile	0.3614	0.3253	0.1687	0.1446	26
2nd Quintile	0.3750	0.3036	0.1964	0.1250	110
3rd Quintile	0.1857	0.2286	0.4571	0.1286	249
4rth Quintile	0.1667	0.2500	0.1667	0.4167	425
Total	79	111	187	433	810
Assets Mobility	0.82				
Upward Mobility	0.36				
Immobility	0.51				
Downward Mobility	0.46				

Table B13.2.4: Assets mobility of 5th quintile income class

Transition metrics of income classes (4 th quintile)					
2006					
1999	Lowest Quintile	2nd Quintile	3rd Quintile	4 th Quintile	Total
Lowest Quintile	0.1667	0.3333	0.2917	0.2083	26
2nd Quintile	0.1383	0.3404	0.4043	0.1170	110
3rd Quintile	0.0769	0.3173	0.3365	0.2692	249
4th Quintile	0.0000	0.0556	0.3472	0.5972	425
Total	79	111	187	433	810
Assets Mobility	0.85				
Upward Mobility	0.54				
Immobility	0.48				
Downward Mobility	0.31				

Table B13.2.5: Assets mobility of 5th quintile income class

Transition metrics of income classes (Highest quintile)					
2006					
1999	Lowest Quintile	2nd Quintile	3rd Quintile	4 th Quintile	Total
Lowest Quintile	0.0000	0.2000	0.0000	0.8000	26
2nd Quintile	0.0000	0.1148	0.3607	0.5246	110
3rd Quintile	0.0000	0.0800	0.2629	0.6571	249
4th Quintile	0.0022	0.0152	0.1039	0.8788	425
Total	79	111	187	433	810
Assets Mobility	0.91				
Upward Mobility	0.85				
Immobility	0.42				
Downward Mobility	0.07				

Table B14.1.1: Income mobility of lowest assets class

Transition metrics for lowest assets class						
2006						
1999	Lowest Quintile	2nd Quintile	3rd Quintile	4 th Quintile	Highest Quintile	Total
Lowest Quintile	0.1457	0.2848	0.3907	0.1523	0.0265	151
2nd Quintile	0.1980	0.3096	0.3655	0.1066	0.0203	197
3rd Quintile	0.1373	0.2843	0.2941	0.2745	0.0098	102
4th Quintile	0.1333	0.3333	0.2000	0.2667	0.0667	30
Highest Quintile	0.0000	0.3333	0.3333	0.3333	0.0000	3
Total	79	144	168	81	11	483
Income Mobility	0.9960					
Upward Mobility	0.4244					
Immobility	0.2540					
Downward Mobility	0.5716					

Table B14.1.2: Income mobility of 2nd assets class

Transition metrics for 2nd assets class						
1999	2006					Total
	Lowest Quintile	2nd Quintile	3rd Quintile	4rth Quintile	Highest Quintile	
Lowest Quintile	0.1140	0.2281	0.3246	0.2719	0.0614	114
2nd Quintile	0.1130	0.2261	0.3043	0.2696	0.0870	115
3rd Quintile	0.1373	0.1863	0.1667	0.3235	0.1863	102
4rth Quintile	0.0808	0.1616	0.2626	0.3232	0.1717	99
Highest Quintile	0.0588	0.1765	0.1765	0.3824	0.2059	34
Total	50	93	121	140	60	464
Income Mobility	0.9910					
Upward Mobility	0.5571					
Immobility	0.2590					
Downward Mobility	0.4339					

Table B14.1.3: Income mobility of 3rd assets class

Transition metrics for 3rd assets class						
1999	2006					Total
	Lowest Quintile	2nd Quintile	3rd Quintile	4rth Quintile	Highest Quintile	
Lowest Quintile	0.1059	0.1059	0.2471	0.2588	0.2824	85
2nd Quintile	0.1039	0.1558	0.2468	0.2857	0.2078	77
3rd Quintile	0.0818	0.0818	0.2909	0.3091	0.2364	110
4rth Quintile	0.0741	0.0815	0.2370	0.2593	0.3481	135
Highest Quintile	0.1011	0.0562	0.0899	0.2360	0.5169	89
Total	45	46	112	134	159	496
Income Mobility	0.9178					
Upward Mobility	0.6320					
Immobility	0.3322					
Downward Mobility	0.2858					

Table B14.1.4: Income mobility of highest assets class

Transition metrics for Highest assets class						
1999	2006					Total
	Lowest Quintile	2nd Quintile	3rd Quintile	4rth Quintile	Highest Quintile	
Lowest Quintile	0.0095	0.0095	0.0762	0.1810	0.7238	105
2nd Quintile	0.0185	0.0185	0.0741	0.1296	0.7593	54
3rd Quintile	0.0702	0.0263	0.0439	0.1667	0.6930	114
4rth Quintile	0.0349	0.0262	0.0742	0.1878	0.6769	229
Highest Quintile	0.0238	0.0139	0.0456	0.1111	0.8056	504
Total	30	18	57	144	757	1,006
Income Mobility	0.9837					
Upward Mobility	0.8725					
Immobility	0.2663					
Downward Mobility	0.1112					

Table B14.2.1: Consumption mobility of lowest quartile assets class

Transition metrics for Lowest quartiles					
2006					
1999	Lowest Quintile	2nd Quintile	3rd Quintile	4rth Quintile	Total
Lowest Quintile	0.6667	0.2000	0.0982	0.0351	285
2nd Quintile	0.5547	0.2044	0.2044	0.0365	137
3rd Quintile	0.5778	0.2889	0.1111	0.0222	45
4rth Quintile	0.3750	0.3750	0.2500	0.0000	8
Total	295	101	63	16	475
Consumption Mobility	1.0059				
Upward Mobility	0.20				
Immobility	0.33				
Downward Mobility	0.81				

Table B14.2.2: Consumption mobility of 2nd quartile assets class

Transition metrics for 2nd quartiles					
2006					
1999	Lowest Quintile	2nd Quintile	3rd Quintile	4rth Quintile	Total
Lowest Quintile	0.3310	0.3517	0.2276	0.0897	145
2nd Quintile	0.3731	0.2687	0.2537	0.1045	134
3rd Quintile	0.2645	0.2479	0.3058	0.1818	121
4rth Quintile	0.1148	0.2787	0.2787	0.3279	61
Total	137	134	121	69	461
Consumption Mobility	0.9222				
Upward Mobility	0.40				
Immobility	0.41				
Downward Mobility	0.52				

Table B14.2.3: Consumption mobility of 3rd quartile assets class

Transition metrics for 3rd quartiles					
2006					
1999	Lowest Quintile	2nd Quintile	3rd Quintile	4rth Quintile	Total
Lowest Quintile	0.1791	0.3134	0.3284	0.1791	67
2nd Quintile	0.1729	0.2256	0.3383	0.2632	133
3rd Quintile	0.1356	0.2486	0.2825	0.3333	177
4rth Quintile	0.0756	0.1429	0.2605	0.5210	119
Total	68	112	148	168	496
Consumption Mobility	0.9306				
Upward Mobility	0.59				
Immobility	0.40				
Downward Mobility	0.35				

Table B14.2.4: Consumption mobility of highest quartile assets class

Transition metrics for Highest quartiles					
	2006				
1999	Lowest Quintile	2nd Quintile	3rd Quintile	4th Quintile	Total
Lowest Quintile	0.0000	0.2500	0.2500	0.5000	8
2nd Quintile	0.0769	0.1868	0.1978	0.5385	91
3rd Quintile	0.0627	0.1144	0.2251	0.5978	271
4th Quintile	0.0284	0.0727	0.1517	0.7472	633
Total	42	96	177	688	1,003
Consumption Mobility	0.9470				
Upward Mobility	0.78				
Immobility	0.39				
Downward Mobility	0.17				